



AcepacK

Packaging Machinery



公司简介

Company Profile

上海欧朔智能包装科技有限公司 [ACEPACK] 成立于 2005 年, 注册资本 2000 万元, 是一家专门从事智能包装系统、全自动包装机械装备的研发设计、制造、销售与服务的高新技术企业。ACEPACK 成立至今一直致力于为客户提供完善的包装整体解决方案。公司秉承创新、学习、诚信、团结、共赢的理念, 立足上海、服务全球, 已为 50 多个国家和地区的众多客户提供个性化软袋包装解决方案, 以优质的产品和优秀的服务获得客户的一致好评。ACEPACK 专注于全自动水平式包装机械领域, 以客户需求为导向, 注重产品创新与升级, 现已拥有 70 余项核心专利技术。依托雄厚的技术实力与多年行业经验的积累 ACEPACK 积极探索自动化、智能化包装生产线技术与应用, 立志打造智能包装系统国际化品牌, 为客户创造包装价值。

Shanghai Acepack Intelligent Technology Co., LTD. was established in 2005 with registered capital of 20 million. Acepack is a high-tech enterprise committing on development, manufacturing, sales and service of intelligent packaging system and fully automatic packaging equipment. Since the establishment, Acepack has been dedicating to offer complete turn-key packaging solutions to our customers. Adhering to the concept of Innovation, Study, Honesty, Solidarity and Win-win, Acepack has offered customized pouch packaging solutions to customers located in more than 50 countries and regions of the world, and gained its reputation by good quality and service.

Acepack focuses on automatic horizontal packaging machine. Customer oriented, focus on creation and development, Acepack now owns more than 70 patents. With strong technical background and rich experience, Acepack actively explores the technology and application of automatic and intelligent packaging line, aims to become famous international brand of intelligent packaging system, create value for our customers.



品质控制 Quality Control

我们相信严格的品质控制与持续的品质改进, 是实现对客户承诺的第一步。

We believe in strict quality control and consistent quality improvement, is the first step of our commitment to our costumers.



全球市场 Global Market

无论国内还是海外, 我们都将是您可依赖的包装合作伙伴。Whether domestic or overseas, we are always your trustable packaging partner.



技术创新 Technical Innovation

卓越的研发团队与创新能力, 让您的需求成为现实。

We are pride of our R&D and innovation department and we can bring your ideas to reality.



客户服务 Customer Service

从安装到调试到生产, 我们的服务伴随您每一步。

From installation and comissioning to production, our service is everywhere and at any time.



目录 Index

水平式全自动包装机 Horizontal Packing Machine	4 ~ 45
引导页 Guiding Page	4 ~ 5
自立袋机型 DS Series Doypack Machine	6 ~ 13
给袋式机型 SG Series Pre-made Pouch Machine	14 ~ 25
高速机型 HS Series High-speed Machine	26 ~ 29
标准机型 S Series Standard Machine	30 ~ 41
真空包装机 V Series Vacuum Packaging Machine	42 ~ 45

辅助装置 Assistive Devices	46 ~ 51
常用下料装置 Filling Device	46 ~ 47
常规上料装置 Feeding Device	48 ~ 49
特殊上料和除尘 Feeding Device and Dedusting Equipment	50
后道包装解决方案 End-line Packing Equipment	51

包装解决方案 Packaig Solution	52 ~ 57
----------------------------	---------

企业资质及用户 Our Reference	58 ~ 59
--------------------------	---------



五大系列水平包装机 5 Series of Horizontal Packaging Machine

DS Series Doypack (Stand-up Pouch) Machine 自立袋机型

此系列专门针对自立袋包装需求而设计,可实现标准自立袋,及加拉链、挂孔、吸嘴和异型等特殊功能。同时还拥有大袋自立袋系列和双出自立袋系列,适合客户大规格、高速需求。
DS series is designed for doypack packaging need, it can make standard doypack pouches, as well as with special additional functions like zipper, hanging hole, spout or special shapes. It also has big size doypack series and duplex doypack series, which can meet packaging requirement of big volume and high speed.

单出系列 (Simplex Series): DS-140S,DS-140SZ,DS-140SC
DS-180S, DS-180SZ,DS-180SC,
DS-180SXC
大袋系列 (Big Size Series): DS-240S,DS-240SZ,DS-240SXC
双出系列 (Duplex Series): DS-280DS,DS-280DSZ,
DS-280DSC,DS-280DSXC

HS Series High-speed Machine 高速机型

此系列专门针对小袋包装高速需求而设计。三出袋系列,最高速度可达 240 袋 / 分钟,四出袋系列,最高速度可达 320 袋 / 分钟。
HS series is designed to meet high speed packaging need of small bags. With triplex series maximum speed 240 bags/min, and quadriplex series maximum speed 320 bags/min.

三出系列 (Triplex Series): HS-270T
四出系列 (Quadriplex Series): HS-360Q

V Series Vacuum Packaging Machine 真空包装

此系列专门针对真空包装设计。由系列水平式包装机配合箱式 / 滚动式抽真空封口系统,完成对物料的真空袋包装。
V series is designed for product vacuum packaging. Standard packaging machine is attached with chamber type / conveyor type vacuum sealing unit to reach the vacuum packaging need.

VBS 系列 series (Chamber Type): VBS-130, VBS-180,
VBS-180D,VBSG-180, VBSG-180D

VRS 系列 series (Conveyor Type): VRS-130, VRS-180,
VRS-180D,VRSG-180, VRSG-180D

SG Series Pre-made Pouch Machine 给袋式机型

此系列专门针对给袋式包装需求而设计,可实现自立袋、平袋、拉链袋、挂孔袋及异型袋的灌装、封口。同时还拥有大袋系列和双出系列,适合客户大规格、高速需求。
SG series is designed for pre-made pouch machine, it can do automatic filling, sealing of doypack, flat pouch and pouches with zipper, hanging hole or special shape. It also has big size series and duplex series, which can meet packaging requirement of big volume and high speed.

单出系列 (Simplex Series): SG-180,SG-180Z,SG-180SC
SG-210,SG-210Z ,SG-210XC
大袋系列 (Big Size Series): SG-240,SG-240Z,SG-240XC
SG-280,SG-280Z,SG-280XC
SG-320,SG-320Z
双出系列 (Duplex Series): SG-360D,SG-360DZ

S Series Standard Machine 标准机型

此系列专门针对标准平袋和小规格自立袋包装需求而设计,可实现三边封、四边封、小规格自立袋和双联袋功能,以及加拉链、挂孔、吸嘴和异型等特殊功能。同时还拥有大袋系列和双出系列,适合客户大规格、高速需求。
S series is designed for standard flat pouch and small doypack, it can realize three-side, four-side seal and twin-link bag function. it can realize special functions on flat pouch with choices of zipper, hanging hole, spout and special shape. It also has big size series and duplex series, which can meet packaging requirement of big volume and high speed.

单出系列 (Simplex Series): S-110,S-110T,S-130,S-180S-180T
S-180Z,S-180C
大袋系列 (Big Size Series): S-240
双出系列 (Duplex Series): S-180D,S-180DC,S-240D,
S-240DZ,S-240DC

打造智能包装系统国际化品牌 An International Brand Of Intelligent Build Packaging System

Professional, Dedicated, Extreme and responsible
Innovation, Study, Honesty, Solidarity, Win-win

专业·专注·极致·责任·创新·学习·诚信·团结·共赢

DS-180S/DS-180SZ/DS-180SC/DS-180SXC

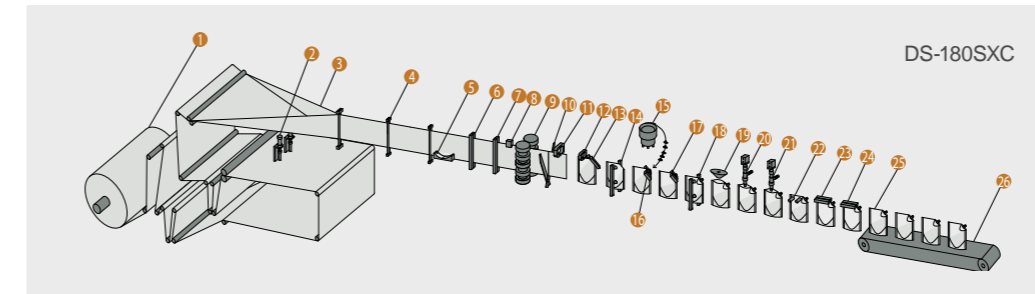


技术参数 Technical Parameter

型号 Model	袋型尺寸范围 Pouch Size	包装容量范围 Filling Capacity	包装速度 Packaging Capacity	功率 Power	耗气量 Air Consumption	设备尺寸 Machine Dimensions	重量 Weight	功能 Function
DS-180S	90mm×110mm (Min.)	1200ml	40-60ppm	6.5kw	200 NL/min	5550mm(L) 1100mm(W) 1400mm(H)	2000kg	自立袋, 异型, 挂孔 Doy Pack, Shape, Hanging Hole
	180mm×260mm (Max.)							
DS-180SZ	90mm×110mm (Min.)	1200ml	40-60ppm	8kw	200 NL/min	6450mm(L) 1100mm(W) 1400mm(H)	2300kg	自立袋, 异型, 挂孔, 拉链 Doy pack, Shape, Hanging hole, Zipper
	180mm×260mm (Max.)							
DS-180SC	90mm×110mm (Min.)	1000ml	40-60ppm	8kw	250 NL/min	5550mm(L) 1100mm(W) 1400mm(H)	2200kg	自立袋, 异型, 挂孔, 直吸嘴 Doy pack, Shape, Hanging Hole, Top Spout
	160mm×260mm (Max.)							
DS-180SXC	110mm×180mm (Min.)	1200ml	40-60ppm	9kw	250 NL/min	6650mm(L) 1100mm(W) 1400mm(H)	2500kg	自立袋, 异型, 挂孔, 斜吸嘴 Doy pack, Shape, Hanging Hole, Corner Spout
	180mm×260mm (Max.)							

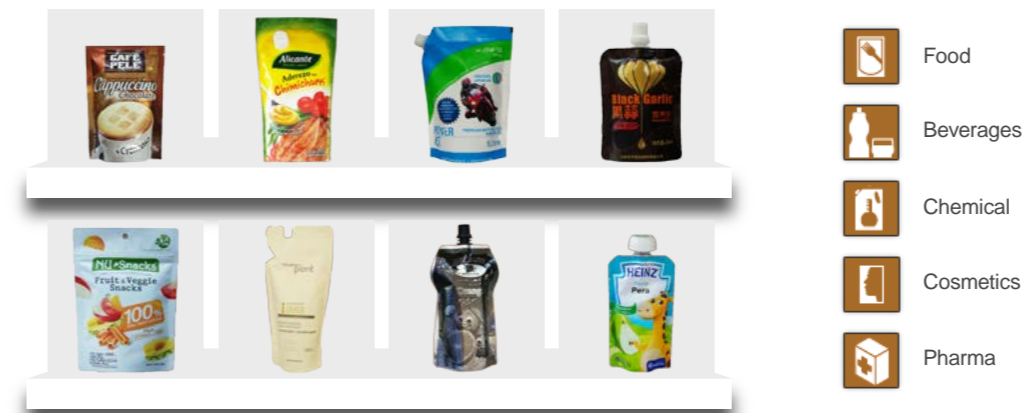
DS-180 系列专门为自立袋需求而设计, 并拥有灵活的功能应用, 如加挂孔、异型、拉链、吸嘴等功能。
DS-180 Series Design for doypack. With functions of making hanging hole, special shape, zipper or spout.

工艺流程图 Packing Process



- | | | |
|-----------------------------|-------------------------------|------------------------|
| 1 放膜机构 Film Unwind | 10 剪切机构 Cutting | 19 吹气装置 Air Flushing |
| 2 底部冲孔 Bottom Hole Punching | 11 夹袋 I Pouch Catching I | 20 充填 I Filling I |
| 3 包装膜成型 Bag Forming | 12 夹袋 II Pouch Catching II | 21 充填 II Filling II |
| 4 包装膜导向 Film Guide | 13 斜切机构 Slant Opening Cutting | 22 展袋 Pouch Stretching |
| 5 底封机构 Bottom Seal | 14 第一开袋 First Pouch Opening | 23 上封 I Top Seal I |
| 6 竖封机构 I Vertical Seal I | 15 振动装置 Vibrator | 24 上封 II Top Seal II |
| 7 竖封机构 II Vertical Seal II | 16 加嘴装置 Spout Inserting | 25 成品 Finished Product |
| 8 色标检测 Photocell | 17 封嘴装置 Spout Seal | 26 成品输出 Outlet |
| 9 伺服牵袋 Servo Advance | 18 第二开袋 Second Pouch Opening | |

包装样袋 Packaging Example



- Food
- Beverages
- Chemical
- Cosmetics
- Pharma

独立放膜机构 Independent Film Unwind Unit

- 保证薄膜张力控制
Ensure good control of film tensile force
- 更大的膜卷宽度、规格适应
More flexible for film roll width or pouch specification
- 更好的实现自立袋成型
Better doypack forming

伺服牵袋系统 Servo Advance System

- 数字化规格切换, 简单方便
Easy computerized specification change
- 牵袋更稳定, 偏差更小
Stable pouch advance with less deviation
- 牵袋扭矩大, 适合大规格
Big torque moment of pouch advance, suitable for big volume

拉链功能 Zipper Function

- 独立的拉链放卷装置
Independent zipper unwind device
- 稳定的拉链张力控制
Stable zipper tensile force control
- 平整的拉链封合
Even zipper seal

吸嘴功能 Spout Function

- 平整美观的吸嘴封合
Even spout seal with good appearance
- 吸嘴封合强度高, 无泄漏
High spout seal strength, no leakage

DS-240S/DS-240SZ/DS-240SXC

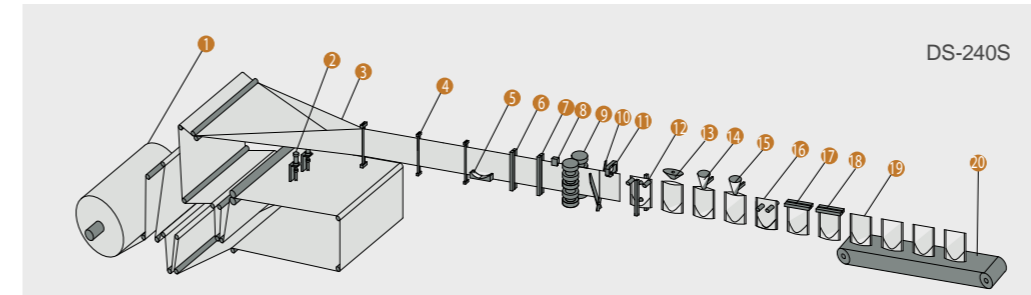


技术参数 Technical Parameter

型号 Model	袋型尺寸范围 Pouch Size	包装容量范围 Filling Capacity	包装速度 Packaging Capacity	功率 Power	耗气量 Air Consumption	设备尺寸 Machine Dimensions	重量 Weight	功能 Function
DS-240S	100mm×120mm (Min.)	2000ml	30-60ppm	10kw	300 NL/min	6900mm(L) 1250mm(W) 1550mm(H)	2600kg	自立袋, 异型, 挂孔 Doy Pack, Shape, Hanging Hole
	240mm×320mm (Max.)							
DS-240SZ	100mm×120mm (Min.)	2000ml	30-60ppm	10kw	300 NL/min	7500mm(L) 1250mm(W) 1550mm(H)	2800kg	自立袋, 异型, 挂孔, 拉链 Doy pack, Shape, Hanging hole, Zipper
	240mm×320mm (Max.)							
DS-240SXC	110mm×180mm (Min.)	2000ml	30-60ppm	11kw	350 NL/min	7900mm(L) 1250mm(W) 1550mm(H)	3000kg	自立袋, 异型, 挂孔, 斜吸嘴 Doy pack, Shape, Hanging Hole, Corner Spout
	240mm×320mm (Max.)							

DS-240 系列专门为大规模自立袋需求而设计, 满足用户大规模包装需求, 并拥有灵活的功能应用, 如加挂孔、异型、拉链、吸嘴等功能
DS-240 Series Design for big volume doypack. With functions of making hanging hole, special shape, zipper or spout.

工艺流程图 Packing Process



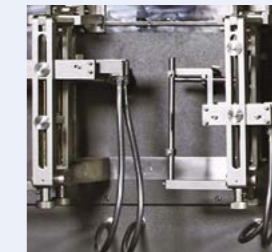
- | | | |
|-----------------------------|-----------------------|------------------------|
| 1 放膜机构 Film Unwind | 8 色标检测 Photocell | 15 充填 II Filling II |
| 2 底部冲孔 Bottom Hole Punching | 9 伺服牵袋 Servo Advance | 16 展袋 Pouch Stretching |
| 3 包装膜成型 Bag Forming | 10 剪切机构 Cutting | 17 上封 I Top Seal I |
| 4 包装膜导向 Film Guide | 11 夹袋 Pouch Catching | 18 上封 II Top Seal II |
| 5 底封机构 Bottom Seal | 12 开袋装置 Pouch Opening | 19 成品 Finished Product |
| 6 竖封机构 I Vertical Seal I | 13 吹气装置 Air Flushing | 20 成品输出 Outlet |
| 7 竖封机构 II Vertical Seal II | 14 充填 I Filling I | |

包装样袋 Packaging Example



伺服牵袋系统 Servo Advance System

- 数字化规格切换, 简单方便
Easy computerized specification change
- 牵袋更稳定, 偏差更小
Stable pouch advance with less deviation
- 牵袋扭矩大, 适合大规模
Big torque moment of pouch advance, suitable for big volume



拉链功能 Zipper Function

- 独立的拉链放卷装置
Independent zipper unwind device
- 稳定的拉链张力控制
Stable zipper tensile force control
- 平整的拉链封合
Even zipper seal



吸嘴功能 Spout Function

- 平整美观的吸嘴封合
Even spout seal with good appearance
- 吸嘴封合强度高, 无泄漏
High spout seal strength, no leakage



伺服小车结构 Servo WB Structure

- 运行定位精准, 运行平稳
Accurate positioning with stable operation
- 刚性强, 承重系数大
Good rigidity, big load bearing
- 小行程大
Long WB moving distance

DS-280DS/DS-280DSZ/DS-280DSC/DS-280DSXC

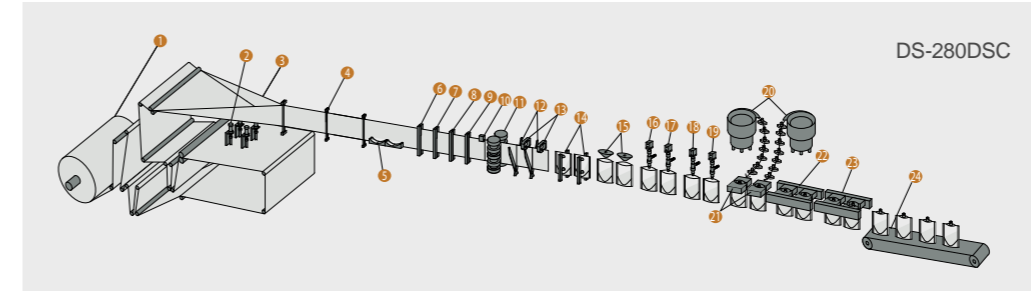


技术参数 Technical Parameter

型号 Model	袋型尺寸范围 Pouch Size	包装容量范围 Filling Capacity	包装速度 Packaging Capacity	功率 Power	耗气量 Air Consumption	设备尺寸 Machine Dimensions	重量 Weight	功能 Function
DS-280DS	90mm×110mm (Min.)	600ml	80-120ppm	10 kw	400 NL/min	7400mm(L) 1060mm(W) 1400mm(H)	3000kg	自立袋, 异型, 挂孔 Doy Pack, Shape, Hanging Hole
	140mm×250mm (Max.)							
DS-280DSZ	90mm×110mm (Min.)	600ml	80-120ppm	12 kw	400NL/min	7800mm(L) 1100mm(W) 1400mm(H)	3400kg	自立袋, 异型, 挂孔, 拉链 Doy pack, Shape, Hanging hole, Zipper
	140mm×250mm (Max.)							
DS-280DSC	90mm×110mm (Min.)	600ml	80-120ppm	11.5 kw	500 NL/min	7400mm(L) 1100mm(W) 1400mm(H)	3100kg	自立袋, 异型, 挂孔, 直吸嘴 Doy pack, Shape, Hanging Hole, Top Spout
	140mm×250mm (Max.)							
DS-280DSXC	110mm×120mm (Min.)	600ml	80-120ppm	13.2 kw	500 NL/min	8600mm(L) 1100mm(W) 1400mm(H)	3400kg	自立袋, 异型, 挂孔, 斜吸嘴 Doy pack, Shape, Hanging Hole, Corner Spout
	140mm×250mm (Max.)							

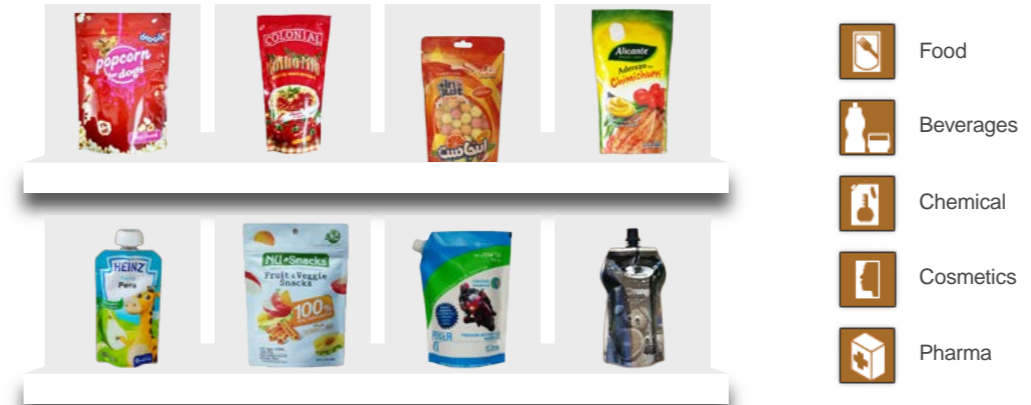
DS-280D 系列拥有双出模式设计与自立袋功能, 最高速度 120 袋 / 分钟。同时满足客户多功能的包装需求, 如加挂孔、异型、拉链、吸嘴等功能。
DS-280D Series Doypack function & duplex design with Max. speed 120ppm. Meet multifunctional packaging requirement like hanging hole, special shape, zipper or spout.

工艺流程图 Packing Process

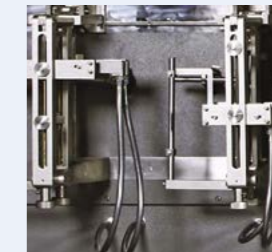


- | | | |
|---------------------------------|--------------------------------|---------------------------------|
| 1 放膜机构 Film Unwind | 10 色标检测 Photocell | 19 第四充填 Fourth Filling |
| 2 底部四冲孔 4 Bottom Holes Punching | 11 伺服牵袋机构 Servo Advance | 20 双震动加嘴 Double Vibrator |
| 3 包装膜成型 Bag Forming | 12 双剪切机构 Double Cutting | 21 双封嘴机构 Double Spout Inserting |
| 4 包装膜导向 Film Guide | 13 双夹袋机构 Double Pouch Catching | 22 上封 Top Seal I |
| 5 双底封机构 Double Bottom Seal | 14 双开袋机构 Double Pouch Opening | 23 冷却整平 Top Seal II |
| 6 第一竖封 First Vertical Seal | 15 双吹气装置 Double Air Flushing | 24 成品输出 Outlet |
| 7 第二竖封 Second Vertical Seal | 16 第一充填 First Filling | |
| 8 第三竖封 Third Vertical Seal | 17 第二充填 Second Filling | |
| 9 第四竖封 Fourth Vertical Seal | 18 第三充填 Third Filling | |

包装样袋 Packaging Example



- #### 双出模式设计 Duplex Design
- 运行稳定, 调整方便
Stable operation, easy adjustment
 - 一次出两袋, 产能翻倍
2 pouches at the same time, double productivity



- #### 拉链功能 Zipper Function
- 独立的拉链放卷装置
Independent zipper unwind device
 - 稳定的拉链张力控制
Stable zipper tensile force control
 - 平整的拉链封合
Even zipper seal

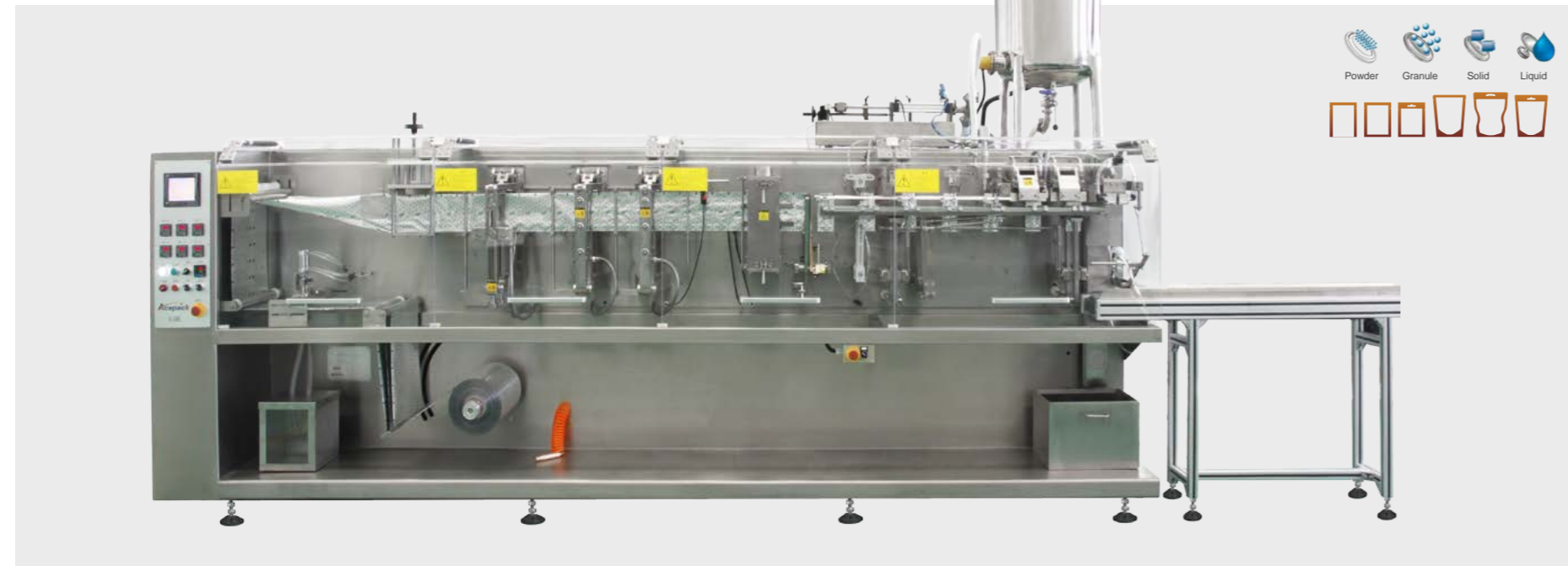


- #### 吸嘴功能 Spout Function
- 平整美观的吸嘴封合
Even spout seal with good appearance
 - 吸嘴封合强度高, 无泄漏
High spout seal strength, no leakage



- #### 伺服小车结构 Servo WB Structure
- 运行定位精准, 运行平稳
Accurate positioning with stable operation
 - 刚性强, 承重系数大
Good rigidity, big load bearing
 - 小车行程大
Long WB moving distance

DS-140S/DS-140SZ/DS-140SC

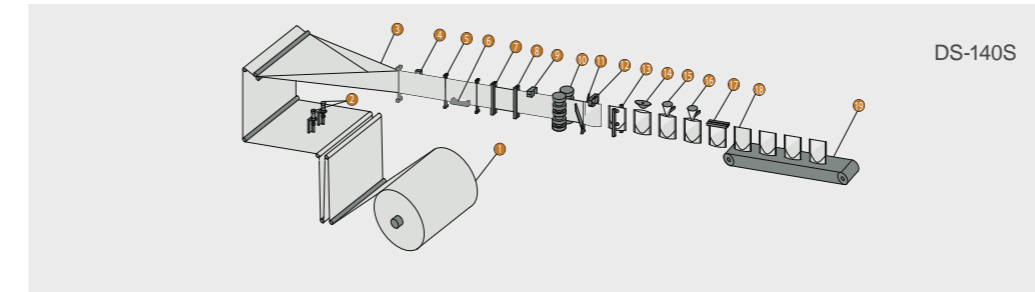


技术参数 Technical Parameter

型号 Model	袋型尺寸范围 Pouch Size	包装容量范围 Filling Capacity	包装速度 Packaging Capacity	功率 Power	耗气量 Air Consumption	设备尺寸 Machine Dimensions	重量 Weight	功能 Function
DS-140S	60mm×90mm (Min.)	500ml	50-80ppm	6.5kw	200 NL/min	4280mm(L) 970mm(W) 1500mm(H)	1600kg	平袋, 自立袋 Flat Pouch, Doy Pack
	140mm×225mm (Max.)							
DS-140SZ	60mm×90mm (Min.)	500ml	50-80ppm	8 kw	200 NL/min	4780mm(L) 970mm(W) 1500mm(H)	1800kg	平袋, 自立袋, 拉链 Flat Pouch, Doy Pack
	140mm×225mm (Max.)							
DS-140SC	60mm×90mm (Min.)	500ml	50-80ppm	7.4 kw	200 NL/min	4280mm(L) 970mm(W) 1500mm(H)	1600kg	平袋, 自立袋, 直吸嘴 Flat Pouch, Doy Pack, Top Spout
	140mm×225mm (Max.)							

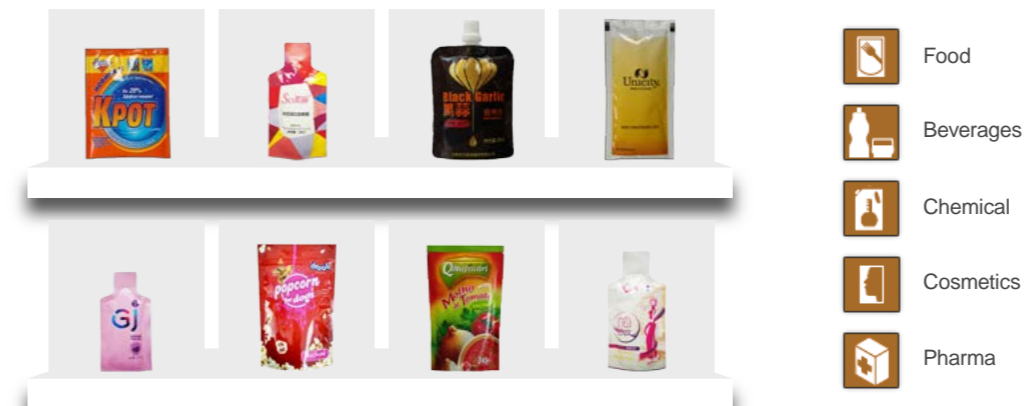
DS-140S 拥有简洁的自立袋模式设计, 适用于各种物料小计量包装, 是实现小规格自立袋包装需求的经济型解决方案。
DS-140S is designed for packaging small stand up pouch, it is suitable for all kinds of products and is an economic packaging solution for small doypacks.

工艺流程图 Packing Process



- | | | |
|-----------------------------|----------------------------|------------------------|
| 1 放膜机构 Film Unwind | 8 竖封机构 II Vertical Seal II | 19 充填 I Filling I |
| 2 底部冲孔 Bottom Hole Punching | 9 易撕口装置 Tear Notch | 20 充填 II Filling II |
| 3 包装膜成型 Bag Forming | 10 伺服牵袋 Servo Advance | 21 上封装置 Top Seal |
| 4 色标检测 Photocell | 11 剪切机构 Cutting | 22 成品 Finished Product |
| 5 包装膜导向 Film Guide | 12 夹袋 I Pouch Catching I | 23 成品输出 Outlet |
| 6 底封机构 Bottom Seal | 13 开袋机构 Pouch Opening | |
| 7 竖封机构 I Vertical Seal I | 14 吹气装置 Air Flushing | |

包装样袋 Packaging Example



伺服牵袋系统 Servo Advance System

- 数字化规格切换, 简单方便
Easy computerized specification change
- 牵袋更稳定, 偏差更小
Stable pouch advance with less deviation
- 牵袋扭矩大, 适合大规格
Big torque moment of pouch advance, suitable for big volume

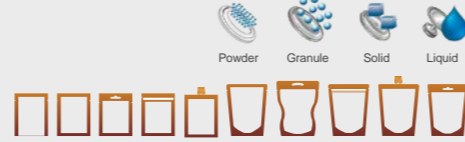
双工位下料 Dual Filling Station

- 缩短一半下料时间
Reduce filling time by half
- 提高下料精度
Improved filling accuracy
- 可 2 种物料组合下料
Can fill 2 products simultaneously

轻盈化小车 Light Walking Beam

- 更高的运行速度
Faster working speed
- 更长的使用寿命
Longer operational life span

SG-180/SG-180Z/SG-180C



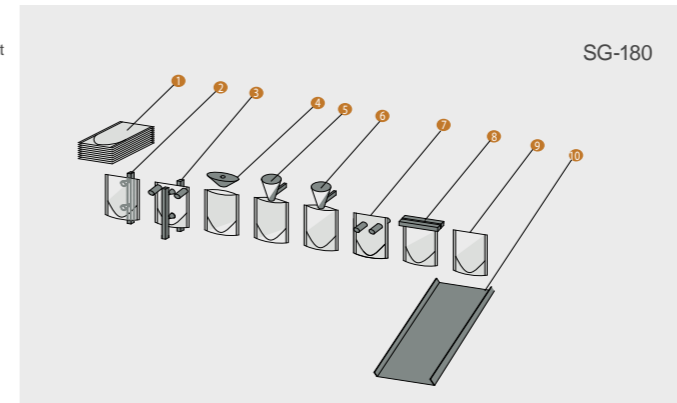
技术参数 Technical Parameter

型号 Model	袋型尺寸范围 Pouch Size	包装容量范围 Filling Capacity	包装速度 Packaging Capacity	功率 Power	耗气量 Air Consumption	设备尺寸 Machine Dimensions	重量 Weight	功能 Function
SG-180	60mm×80mm (Min.)	1200ml	30-60ppm	1.8kw	200 NL/min	1990mm(L) 970mm(W) 1390mm(H)	700kg	平袋, 自立袋, Flat Pouch, Doy Pack
	180mm×310mm (Max.)							
SG-180Z	60mm×80mm (Min.)	1200ml	30-60ppm	1.8kw	200 NL/min	1990mm(L) 970mm(W) 1390mm(H)	700kg	平袋, 自立袋, 拉链 Flat Pouch, Doy Pack, Zipper
	180mm×310mm (Max.)							
SG-180C	60mm×80mm (Min.)	1000ml	30-60ppm	2.6kw	250 NL/min	2190mm(L) 970mm(W) 1400mm(H)	800kg	平袋, 自立袋, 吸嘴 Flat Pouch, Doy Pack, Spout
	160mm×310mm (Max.)							

SG-180 系列给袋式包装机, 适用平袋和自立袋包装, 适用于小规格成品预制袋包装。
SG-180 Series Premade pouch packaging machine for flat pouch and doypack pouch, suitable for small premade pouches.

工艺流程图 Packing Process

- 1 预制袋叠放 Premade Pouch Stack
- 2 翻转取袋机构 Flip-Out Pouch-Picking Unit
- 3 开袋机构 Pouching Opening
- 4 吹气机构 Air Flushing
- 5 一次灌装 Filling I
- 6 二次灌装 Filling II
- 7 展袋机构 Pouch Stretching
- 8 上封装置 Top Seal
- 9 成品 Finished Product
- 10 成品输出 Outlet



包装样袋 Packaging Example



- Food
- Beverages
- Chemical
- Cosmetics
- Pharma



独特的取袋机构 Unique Pouch Picking Unit

- 取袋速度快 Fast pouch picking
- 规格切换方便 Easy specification change
- 加袋无需停机 Needn't stop machine when supply pouches



双工位下料 Dual Filling Station

- 缩短一半下料时间 Reduce filling time by half
- 提高下料精度 Improved filling accuracy
- 可 2 种物料组合下料 Can fill 2 products simultaneously



轻盈化小车 Light Walking Beam

- 更高的运行速度 Faster working speed
- 更长的使用寿命 Longer operational life span

SG-210/SG-210Z/SG-210XC



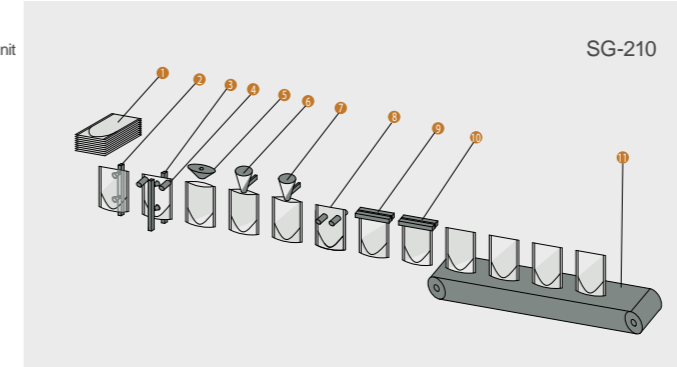
技术参数 Technical Parameter

型号 Model	袋型尺寸范围 Pouch Size	包装容量范围 Filling Capacity	包装速度 Packaging Capacity	功率 Power	耗气量 Air Consumption	设备尺寸 Machine Dimensions	重量 Weight	功能 Function
SG-210	90mm×110mm (Min.)	1600ml	30-60ppm	2.8 kw	200 NL/min	2700mm(L) 970mm(W) 1400mm(H)	900kg	平袋, 自立袋, Flat Pouch, Doy Pack
	210mm×310mm (Max.)							
SG-210Z	90mm×110mm (Min.)	1600ml	30-60ppm	2.8 kw	250 NL/min	2700mm(L) 970mm(W) 1400mm(H)	900kg	平袋, 自立袋, 拉链 Flat Pouch, Doy Pack, Zipper
	210mm×310mm (Max.)							
SG-210XC	110mm×180mm (Min.)	1600ml	30-60ppm	4.4 kw	250 NL/min	3660mm(L) 970mm(W) 1400mm(H)	1300kg	平袋, 自立袋, 斜吸嘴 Flat Pouch, Doy Pack, Spout
	210mm×310mm (Max.)							

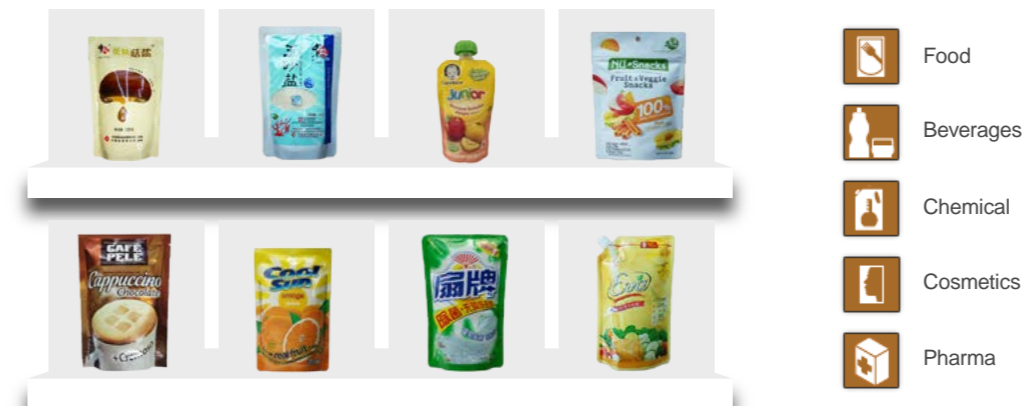
SG-210 系列给袋式包装机, 适用平袋和自立袋包装, 实现灵活、经济的包装解决方案。
SG-210 Series Premade pouch packaging machine. Flexible and economical solution for flat and doypack packaging.

工艺流程图 Packing Process

- 1 预制袋叠放 Premade Pouch Stack
- 2 翻转取袋机构 Flip-Out Pouch-Picking Unit
- 3 开袋机构 Pouch Opening
- 4 辅助开袋机构 Opening Assistance
- 5 吹气机构 Air Flushing
- 6 一次灌装 First Filling
- 7 二次灌装 Second Filling
- 8 展袋 Pouch Stretching
- 9 上封 I Top Seal I
- 10 上封 II Top Seal II
- 11 成品输出 Outlet



包装样袋 Packaging Example



- Food
- Beverages
- Chemical
- Cosmetics
- Pharma

独特的取袋机构 Unique Pouch Picking Unit



- 取袋速度快
Fast pouch picking
- 规格切换方便
Easy specification change
- 加袋无需停机
Needn't stop machine when supply pouches

双工位下料 Dual Filling Station



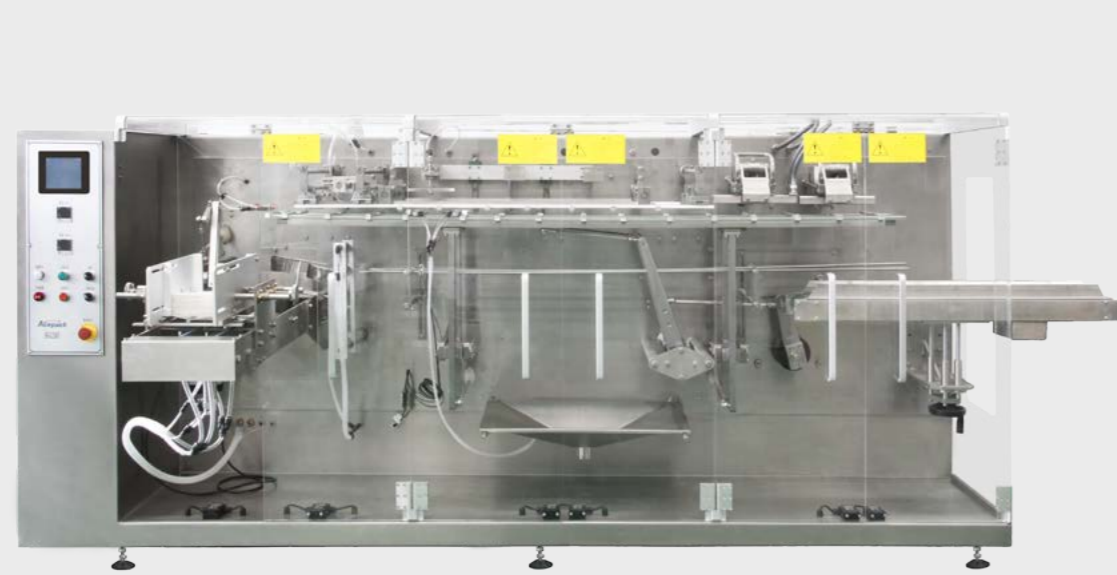
- 缩短一半下料时间
Reduce filling time by half
- 提高下料精度
Improved filling accuracy
- 可 2 种物料组合下料
Can fill 2 products simultaneously

展袋结构 Pouch-Stretching Structure (Patent)



- 展袋平整无褶皱
Even pouch stretching
- 结构紧凑便于调整
Compact structure with easy adjustment

SG-240/SG-240Z/SG-240XC

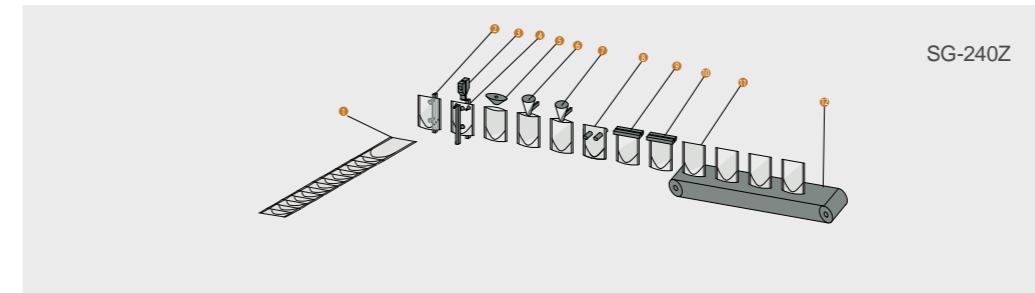


技术参数 Technical Parameter

型号 Model	袋型尺寸范围 Pouch Size	包装容量范围 Filling Capacity	包装速度 Packaging Capacity	功率 Power	耗气量 Air Consumption	设备尺寸 Machine Dimensions	重量 Weight	功能 Function
SG-240	100mm×120mm (Min.)	2000ml	30-60ppm	3.4kw	400 NL/min	3100mm(L) 1010mm(W) 1400mm(H)	1700kg	平袋, 自立袋, Flat Pouch, Doy Pack
	240mm×320mm (Max.)							
SG-240Z	100mm×120mm (Min.)	2000ml	30-60ppm	3.4kw	450 NL/min	3100mm(L) 1010mm(W) 1400mm(H)	1800kg	平袋, 自立袋, 拉链 Flat Pouch, Doy Pack, Zipper
	240mm×320mm (Max.)							
SG-240XC	100mm×180mm (Min.)	2000ml	30-60ppm	4.2kw	450 NL/min	4180mm(L) 1010mm(W) 1400mm(H)	2000kg	平袋, 自立袋, 斜吸嘴 Flat Pouch, Doy Pack, Spout
	240mm×320mm (Max.)							

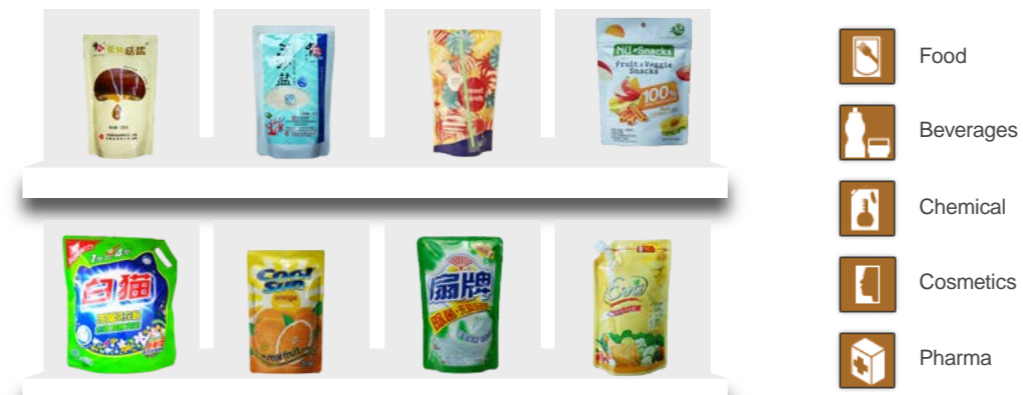
SG-240 系列给袋式包装机专为大规格包装设计, 满足平袋和自立袋大规格包装需求。
SG-240 Series Premade model for big volume flat and doypack packaging.

工艺流程图 Packing Process



- | | | | |
|----------|-----------------------------|---------|------------------|
| ① 输送带给袋 | Premade Pouch Conveyer | ⑦ 二次灌装 | Second Filling |
| ② 翻转取袋机构 | Flip-Out Pouch-Picking Unit | ⑧ 展袋 | Pouch Stretching |
| ③ 开拉链机构 | Zipper Opening | ⑨ 上封 I | Top Seal I |
| ④ 开袋机构 | Pouch Opening | ⑩ 上封 II | Top Seal II |
| ⑤ 吹气机构 | Air Flushing | ⑪ 成品 | Finished Product |
| ⑥ 一次灌装 | First Filling | ⑫ 成品输出 | Outlet |

包装样袋 Packaging Example



独特的取袋机构 Unique Pouch Picking Unit

- 取袋速度快
Fast pouch picking
- 规格切换方便
Easy specification change
- 加袋无需停机
Needn't stop machine when supply pouches

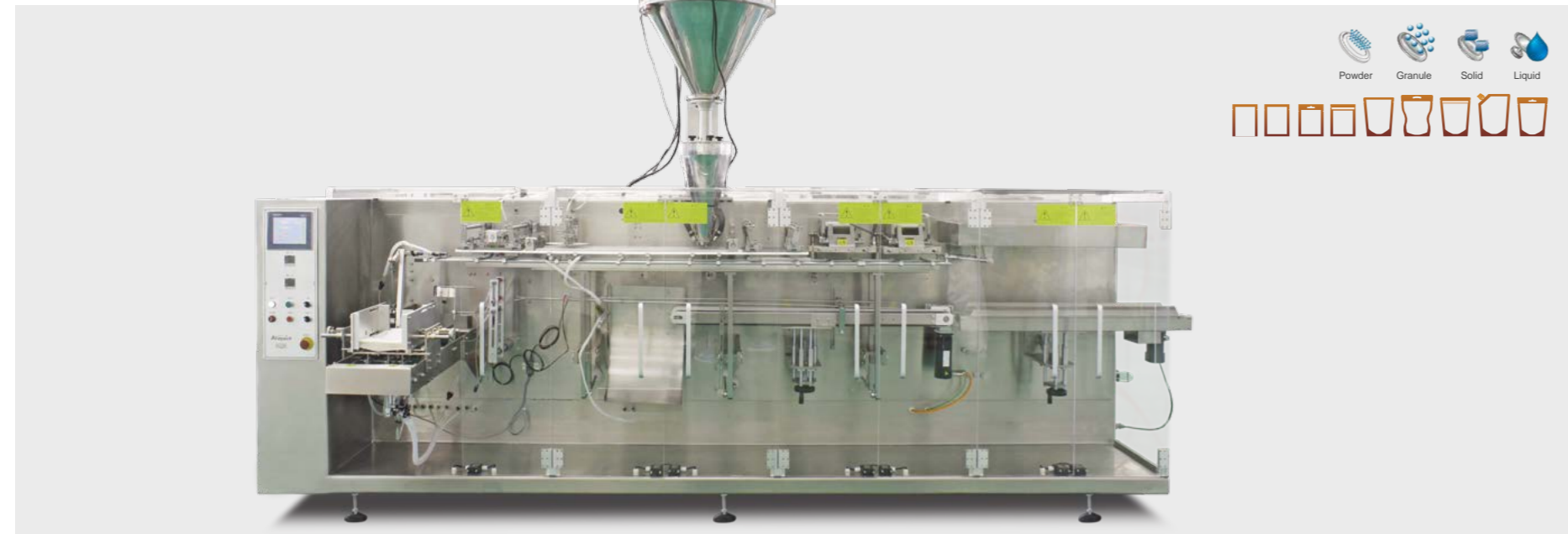
双工位下料 Dual Filling Station

- 缩短一半下料时间
Reduce filling time by half
- 提高下料精度
Improved filling accuracy
- 可 2 种物料组合下料
Can fill 2 products simultaneously

展袋结构 Pouch-Stretching Structure (Patent)

- 展袋平整无褶皱
Even pouch stretching
- 结构紧凑便于调整
Compact structure with easy adjustment

SG-280/SG-280Z/SG-280XC

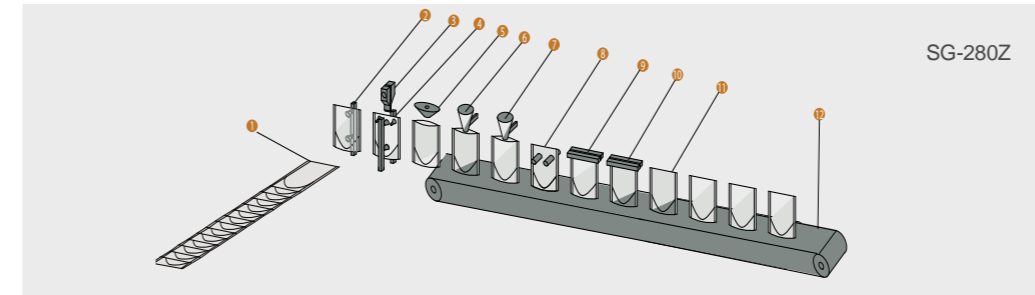


技术参数 Technical Parameter

型号 Model	袋型尺寸范围 Pouch Size	包装容量范围 Filling Capacity	包装速度 Packaging Capacity	功率 Power	耗气量 Air Consumption	设备尺寸 Machine Dimensions	重量 Weight	功能 Function
SG-280	90mm×120mm (Min.)	3000ml	30-60ppm	5.5kw	400 NL/min	4100mm(L) 1020mm(W) 1500mm(H)	1800kg	平袋, 自立袋, Flat Pouch, Doy Pack
	280mm×400mm (Max.)							
SG-280Z	90mm×120mm (Min.)	3000ml	30-60ppm	6.5kw	450 NL/min	4100mm(L) 1020mm(W) 1500mm(H)	2000kg	平袋, 自立袋, 拉链 Flat Pouch, Doy Pack, Zipper
	280mm×400mm (Max.)							
SG-280XC	110mm×180mm (Min.)	3000ml	30-60ppm	6.5kw	450 NL/min	4100mm(L) 1020mm(W) 1500mm(H)	2000kg	平袋, 自立袋, 斜吸嘴 Flat Pouch, Doy Pack, Spout
	280mm×400mm (Max.)							

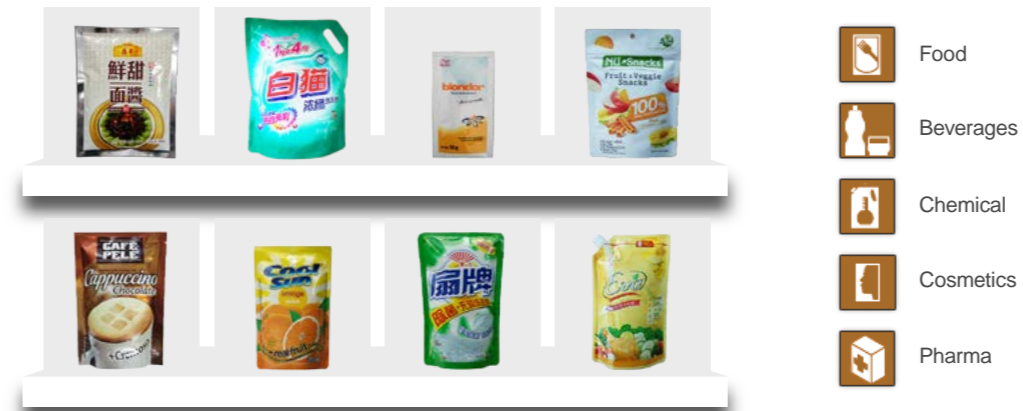
SG-280 系列给袋式包装机专为大规格包装设计, 满足平袋和自立袋大规格包装需求。
SG-280 Series Premade pouch packaging machine design for big volume, suitable for flat and doypack packaging.

工艺流程图 Packing Process



- | | | |
|--------------------------------------|-----------------------|--------------------------------|
| ① 输送带给袋 Premade Pouch Conveyor | ⑦ 二次灌装 Second Filling | ⑪ 成品 Finished Product |
| ② 翻转取袋机构 Flip-Out Pouch-Picking Unit | ⑧ 展袋 Pouch Stretching | ⑫ 伺服托袋输出 Servo Conveyor Output |
| ③ 开拉链机构 Zipper Opening | ⑨ 上封 I Top Seal I | |
| ④ 开袋机构 Pouch Opening | ⑩ 上封 II Top Seal II | |
| ⑤ 吹气机构 Air Flushing | | |
| ⑥ 一次灌装 First Filling | | |

包装样袋 Packaging Example



- Food
- Beverages
- Chemical
- Cosmetics
- Pharma

双工位下料 Dual Filling Station

- 缩短一半下料时间 Reduce filling time by half
- 提高下料精度 Improved filling accuracy
- 可 2 种物料组合下料 Can fill 2 products simultaneously

展袋结构 Pouch-Stretching Structure (Patent)

- 展袋平整无褶皱 Even pouch stretching
- 结构紧凑便于调整 Compact structure with easy adjustment

伺服小车结构 Servo WB Structure

- 运行定位精准, 运行平稳 Accurate positioning with stable operation
- 刚性强, 承重系数大 Good rigidity, big load bearing
- 小车行程大 Long WB moving distance

SG-360D/SG-360DZ

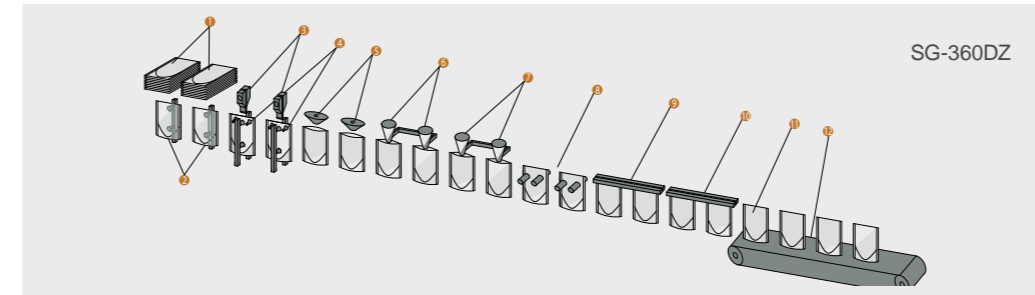


技术参数 Technical Parameter

型号 Model	袋型尺寸范围 Pouch Size	包装容量范围 Filling Capacity	包装速度 Packaging Capacity	功率 Power	耗气量 Air Consumption	设备尺寸 Machine Dimensions	重量 Weight	功能 Function
SG-360D	90mm×110mm (Min.)	1200ml	60-120ppm	4.5kw	500 NL/min	4055mm(L) 980mm(W) 1400mm(H)	2000kg	平袋, 自立袋, Flat Pouch, Doy Pack
	180mm×260mm (Max.)							
SG-360DZ	90mm×110mm (Min.)	1200ml	60-120ppm	4.5kw	550 NL/min	4055mm(L) 980mm(W) 1400mm(H)	2100kg	平袋, 自立袋, 拉链 Flat Pouch, Doy Pack, Zipper
	180mm×260mm (Max.)							

SG-360D 系列给袋式包装机拥有双出模式设计,最高速度 120 袋 / 分钟,适用平袋和自立袋包装,实现高速、灵活、经济的包装解决方案
SG-360D Series Premade & duplex design with Max. speed 120ppm. Flexible, economical and high speed solution for flat and doypack packaging.

工艺流程图 Packing Process



- ① 双预制袋叠放 Double Premade Pouch Stack
- ⑦ 二次灌装 Second Filling
- ② 双翻转取袋机构 Double Flip-Out Pouch-Picking
- ⑧ 展袋 Pouch Stretching
- ③ 双开拉链机构 Double Zipper Opening
- ⑨ 上封 I Top Seal I
- ④ 双开袋机构 Double Pouch Opening
- ⑩ 上封 II Top Seal II
- ⑤ 双吹气机构 Double Air Flushing
- ⑪ 成品 Finished Product
- ⑥ 一次灌装 First Filling
- ⑫ 成品输出 Outlet

包装样袋 Packaging Example



- Food
- Beverages
- Chemical
- Cosmetics
- Pharma



独特的取袋机构 Unique Pouch Picking Unit

- 取袋速度快 Fast pouch picking
- 规格切换方便 Easy specification change
- 加袋无需停机 Needn't stop machine when supply pouches



双出模式设计 Duplex Design

- 运行稳定, 调整方便 Stable operation, easy adjustment
- 一次出两袋, 产能翻倍 2 pouches at the same time, double productivity



展袋结构 Pouch-Stretching Structure

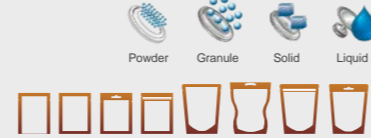
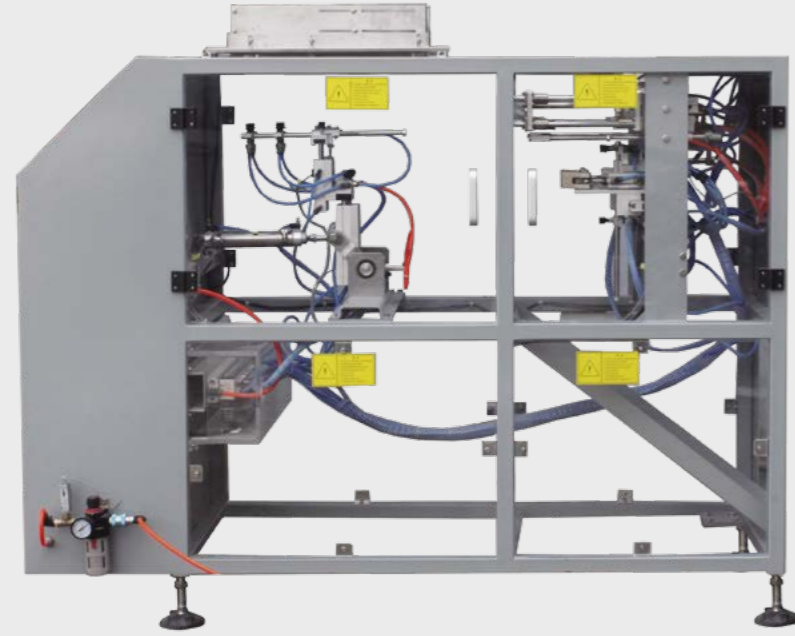
- 展袋平整无褶皱 Even pouch stretching
- 结构紧凑便于调整 Compact structure with easy adjustment



伺服小车结构 Servo WB Structure

- 运行定位精准, 运行平稳 Accurate positioning with stable operation
- 刚性强, 承重系数大 Good rigidity, big load bearing
- 小车行程大 Long WB moving distance

SG-320/SG-320Z



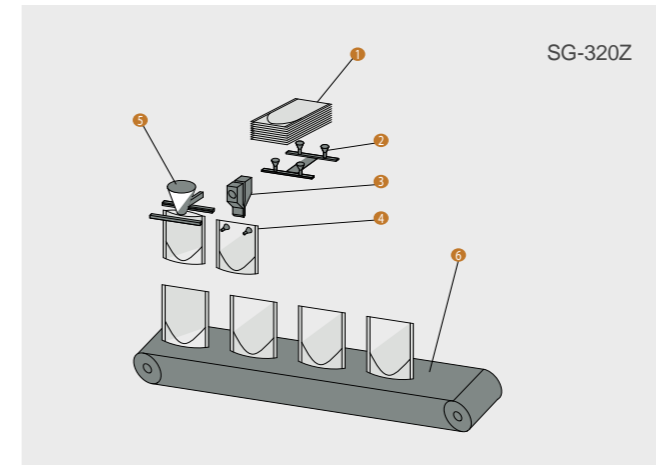
技术参数 Technical Parameter

型号 Model	袋型尺寸范围 Pouch Size	包装容量范围 Filling Capacity	包装速度 Packaging Capacity	功率 Power	耗气量 Air Consumption	设备尺寸 Machine Dimensions	重量 Weight	功能 Function
SG-320	140mm×180mm (Min.)	4000ml	5-15ppm	2.5kw	300 NL/min	1800mm(L) 600mm(W) 1450mm(H)	600kg	平袋, 自立袋, Flat Pouch, Doy Pack
	320mm×410mm (Max.)							
SG-320Z	140mm×180mm (Min.)	4000ml	5-15ppm	2.5kw	350 NL/min	1800mm(L) 1020mm(W) 1300mm(H)	700kg	平袋, 自立袋, 拉链 Flat Pouch, Doy Pack, Zipper
	320mm×410mm (Max.)							

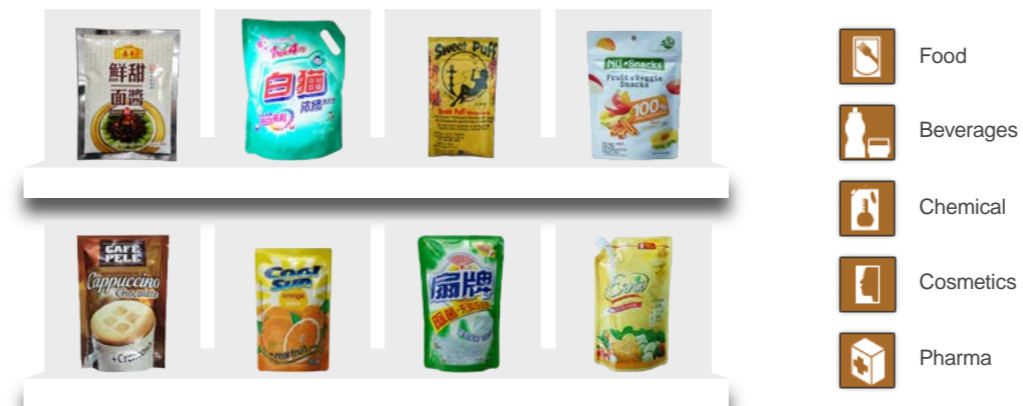
SG-320 系列给袋式包装机专为大袋包装设计, 适用平袋、自立袋、拉链袋的全自动包装, 满足特定包装需要。
SG-320 series is specially designed for large pouches, suitable for flat pouches, doypack and pouches with zipper, and can meet your special packaging requirements.

工艺流程图 Packing Process

- 1 预制袋叠放 Premade Pouch Stack
- 2 翻转取袋机构 Flip-Out Pouch-Picking
- 3 开拉链机构 Zipper Opening
- 4 开袋机构 Pouch Opening
- 5 充填和封口 Filling & Top Seal
- 6 成品输出 Outlet



包装样袋 Packaging Example



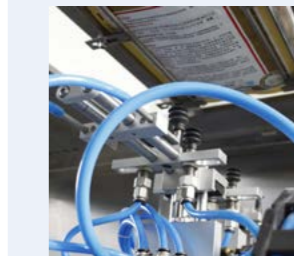
开拉链机构 Zipper Opening Unit

- 运行稳定, 调整方便
Stable operation, easy adjustment



开袋机构 Pouch Opening

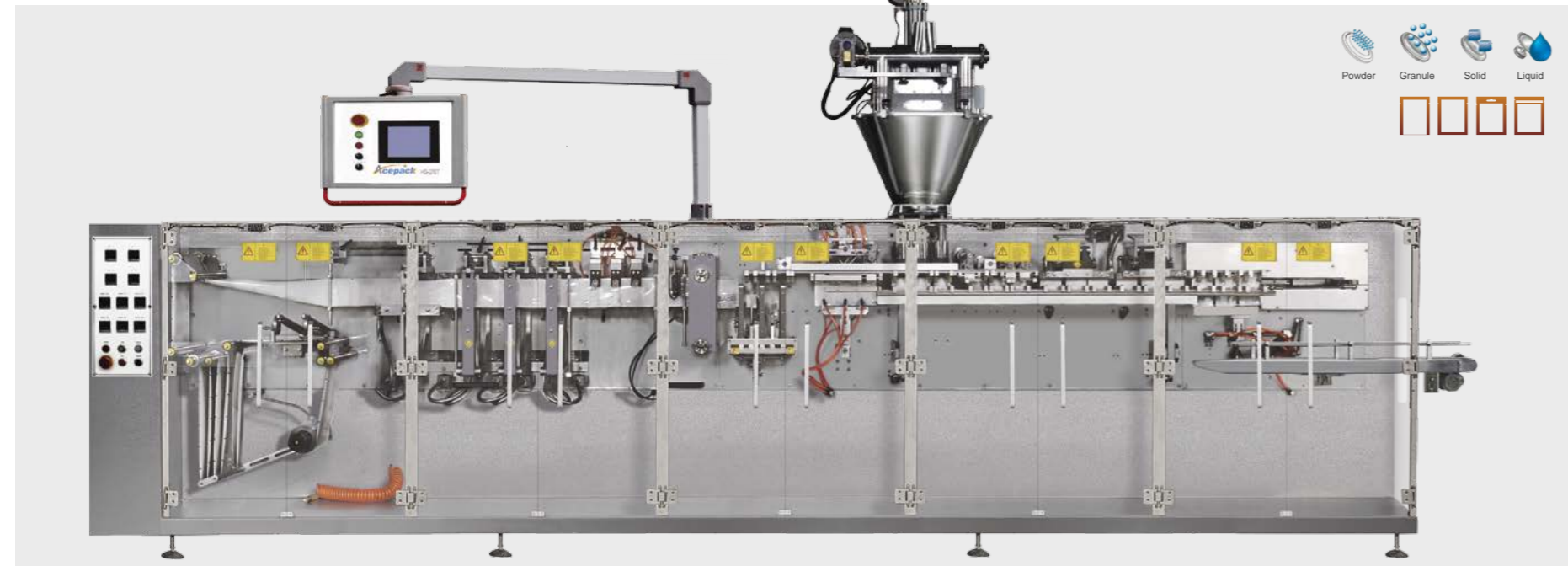
- 多组开袋吸盘设计, 开袋成功率高。
Multi-group vacuum cups design, High bags open success rate.
- 更高包装袋适应性
High bags applicability.



独特的取袋机构 Unique Pouch Picking Unit

- 取袋平稳
Stable Pouch Catching
- 规格切换方便
Easy specification change
- 加袋无需停机
Needn't stop machine when supply pouches

HS-270T

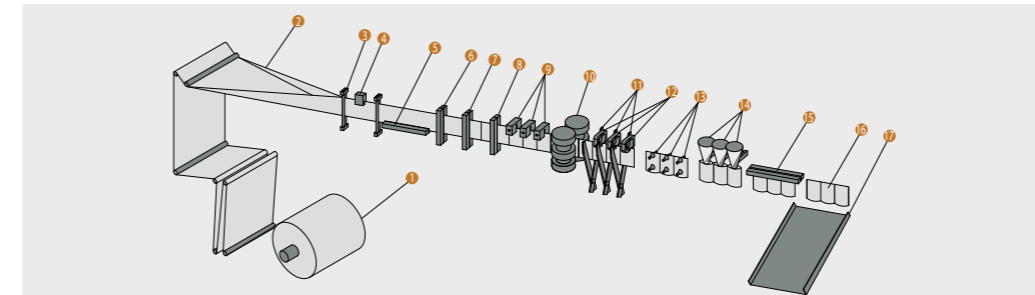


技术参数 Technical Parameter

型号 Model	袋型尺寸范围 Pouch Size	包装容量范围 Filling Capacity	包装速度 Packaging Capacity	功率 Power	耗气量 Air Consumption	设备尺寸 Machine Dimensions	重量 Weight	功能 Function
HS-270T	50mm×70mm (Min.)	100ml	150-240ppm	10.5kw	300 NL/min	5650mm(L) 970mm(W) 1360mm(H)	2500kg	三边封, 四边封 3 side seal, 4 side seal
	90mm×180mm (Max.)							

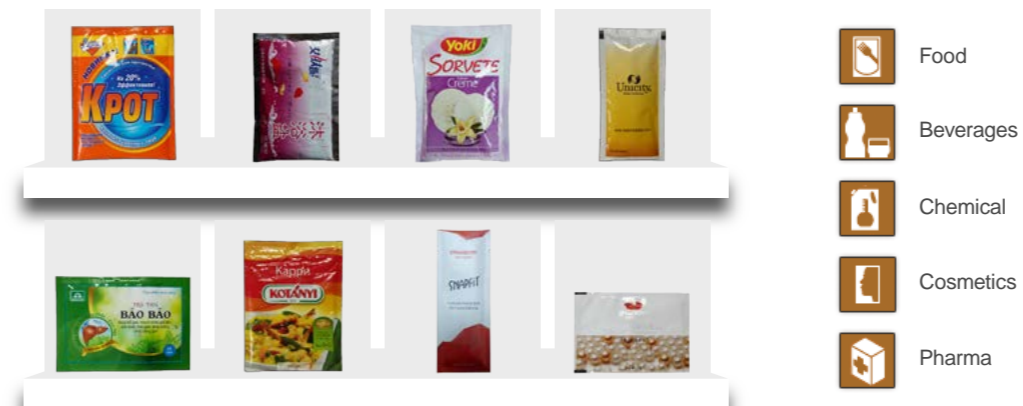
HS-270T 拥有三出模式设计, 最高速度 240 袋 / 分钟, 专为小袋高速包装而设计。
HS-270T Triplex design with maximum speed 240ppm. Special model for small bag and high speed packaging.

工艺流程图 Packing Process



- | | | | |
|---------|----------------------|----------|-----------------------|
| 1 放膜机构 | Film Unwind | 10 伺服牵袋 | Servo Advance |
| 2 包装膜成型 | Bag Forming | 11 三剪切机构 | Triple Cutting |
| 3 包装膜导向 | Film Guide | 12 三夹袋机构 | Triple Pouch Catching |
| 4 色标检测 | Photocell | 13 三开袋机构 | Triple Pouch Opening |
| 5 底封机构 | Bottom Seal | 14 充填 | Filling |
| 6 第一竖封 | First Vertical Seal | 15 上封机构 | Top Seal |
| 7 第二竖封 | Second Vertical Seal | 16 成品 | Finished Product |
| 8 第三竖封 | Third Vertical Seal | 17 成品输出 | Outlet |
| 9 易撕口装置 | Tear Notch | | |

包装样袋 Packaging Example



伺服牵袋系统 Servo Advance System

- 数字化规格切换, 简单方便
Easy computerized specification change
- 牵袋更稳定, 偏差更小
Stable pouch advance with less deviation
- 牵袋扭矩大, 适合大规格
Big torque moment of pouch advance, suitable for big volume



独特三剪刀结构 Unique Triple Knives

- 稳定的剪切张力控制
Stable tensile force control of cutting
- 袋子切口平整无牵连
Even cut, no entanglement
- 剪刀磨损小, 使用寿命长
Little knife abrasion, long operational life span



三工位充填 Triple Filling Station

- 三工位同步充填
3 filling stations work synchronously
- 剂量精度准确
Accurate filling volume



伺服小车结构 Servo WB Structure

- 运行定位精准, 运行平稳
Accurate positioning with stable operation
- 刚性强, 承重系数大
Good rigidity, big load bearing
- 小车行程大
Long WB moving distance

HS-360Q

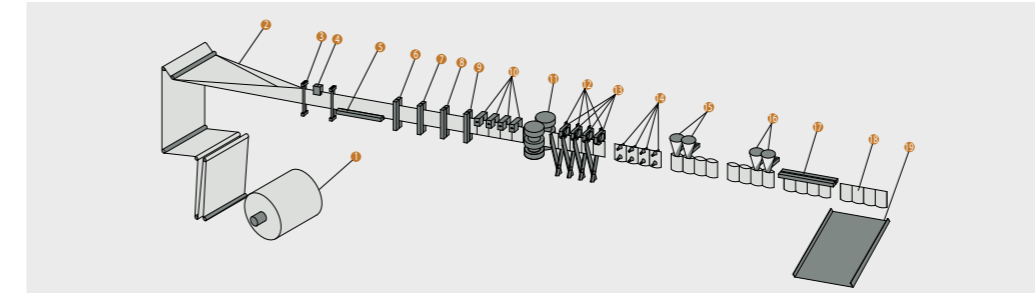


技术参数 Technical Parameter

型号 Model	袋型尺寸范围 Pouch Size	包装容量范围 Filling Capacity	包装速度 Packaging Capacity	功率 Power	耗气量 Air Consumption	设备尺寸 Machine Dimensions	重量 Weight	功能 Function
HS-360Q	50mm×70mm (Min.)	100ml	200-320ppm	14kw	400 NL/min	7050mm(L) 970mm(W) 1360mm(H)	3000kg	三边封, 四边封 3 side seal, 4 side seal
	90mm×180mm (Max.)							

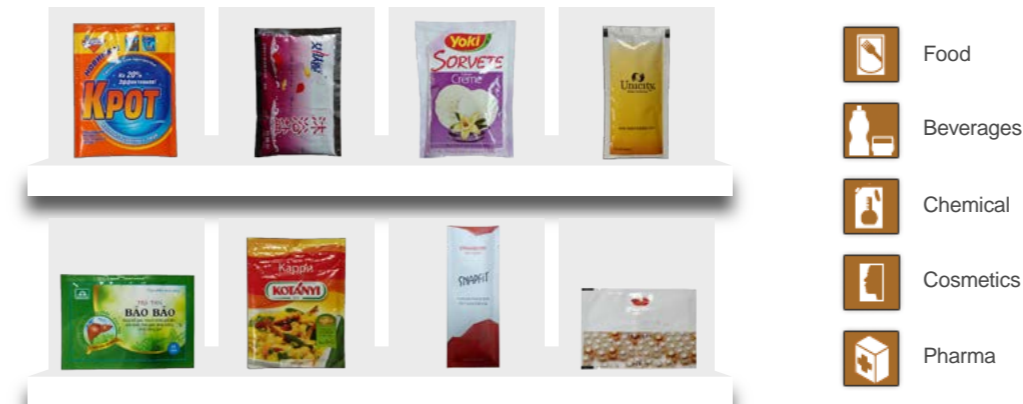
HS-360Q 采用四出模式设计, 最高速度 320 袋 / 分钟, 专为小袋高速包装而设计。
HS-360Q Quadroplex design with maximum speed 320 ppm. Special model for small bag and high speed packaging.

工艺流程图 Packing Process



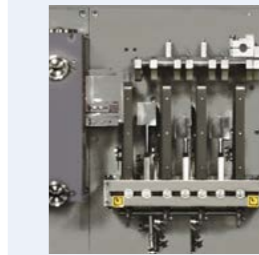
- | | | |
|-----------------------------|----------------------------------|------------------------|
| 1 放膜机构 Film Unwind | 8 第三竖封 Third Vertical Seal | 15 第一充填 First Filling |
| 2 包装膜成型 Bag Forming | 9 第四竖封 Fourth Vertical Seal | 16 第二充填 Second Filling |
| 3 包装膜导向 Film Guide | 10 易撕口装置 Tear Notch | 17 上封机构 Top Seal |
| 4 色标检测 Photocell | 11 伺服牵袋 Servo Advance | 18 成品 Finished Product |
| 5 底封机构 Bottom Seal | 12 四剪切机构 Fourfold Cutting | 19 成品输出 Outlet |
| 6 第一竖封 First Vertical Seal | 13 四夹袋机构 Fourfold Pouch Catching | |
| 7 第二竖封 Second Vertical Seal | 14 四开袋机构 Fourfold Pouch Opening | |

包装样袋 Packaging Example



伺服牵袋系统 Servo Advance System

- 数字化规格切换, 简单方便
Easy computerized specification change
- 牵袋更稳定, 偏差更小
Stable pouch advance with less deviation
- 牵袋扭矩大, 适合大规格
Big torque moment of pouch advance, suitable for big volume



独特四剪刀结构 Unique Quadplex Knives

- 稳定的剪切张力控制
Stable tensile force control of cutting
- 袋子切口平整无牵连
Even cut, no entanglement
- 剪刀磨损小, 使用寿命长
Little knife abrasion, long operational life span



四工位充填 Quadplex Filling Station

- 四工位同步充填
4 filling stations work synchronously
- 剂量精度准确
Accurate filling volume



伺服小车结构 Servo WB Structure

- 运行定位精准, 运行平稳
Accurate positioning with stable operation
- 刚性强, 承重系数大
Good rigidity, big load bearing
- 小车行程大
Long WB moving distance

S-110/S-110T



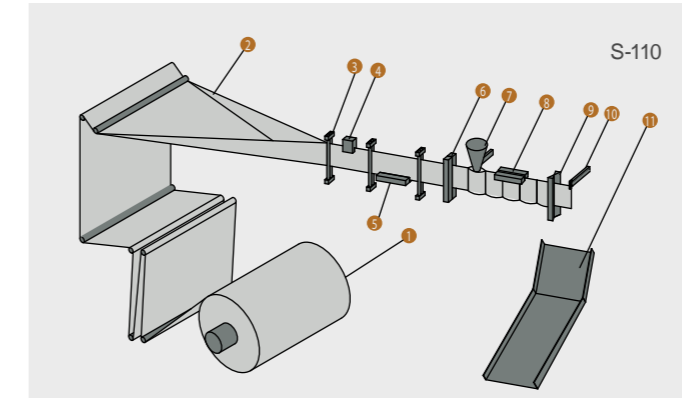
技术参数 Technical Parameter

型号 Model	袋型尺寸范围 Pouch Size	包装容量范围 Filling Capacity	包装速度 Packaging Capacity	功率 Power	耗气量 Air Consumption	设备尺寸 Machine Dimensions	重量 Weight	功能 Function
S-110	50mm×50mm (Min.)	60ml	40-80ppm	2kw	0 NL/min	2060mm(L) 750mm(W) 1400mm(H)	520kg	三边封, 四边封 3 side seal, 4 side seal
	110mm×130mm (Max.)							
S-110T	50mm×50mm (Min.)	60ml	40-80ppm	2.5kw	100 NL/min	2200mm(L) 750mm(W) 1400mm(H)	700kg	三边封, 四边封, 联袋 3 side seal, 4 side seal, linked
	110mm×120mm (Max.)							

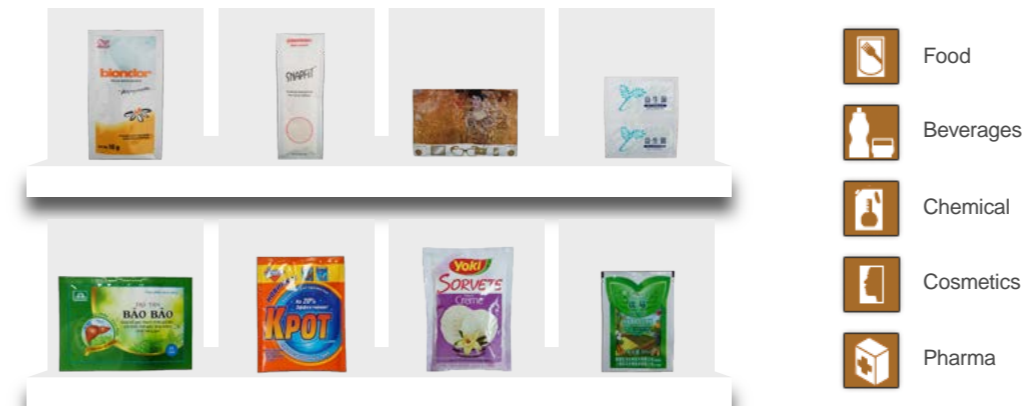
S-110 拥有简洁的机械设计, 是实现小袋包装的经济型解决方案
S-110 Compact body. Economical packaging solution for small bags.

工艺流程图 Packing Process

- 1 放膜机构 Film Unwind
- 2 包装膜成型 Pouch Forming
- 3 包装膜导向 Film Guide
- 4 色标检测 Photocell
- 5 底封机构 Bottom Seal
- 6 竖封机构 Vertical Seal
- 7 充填机构 Filling
- 8 上封机构 Top Seal
- 9 剪切机构 Cutting
- 10 牵袋机构 Pouch Pulling
- 11 成品输出 Outlet



包装样袋 Packaging Example



- Food
- Beverages
- Chemical
- Cosmetics
- Pharma

机械开袋 Mechanical Pouch-Open

- 无压缩空气消耗
No compressed air consumption
- 开袋成功率 100%
100% pouch opening rate

一体化封块 Integrated Sealing Bars

- 结构紧凑
Compact structure
- 运行空间小
Less work space

S-130



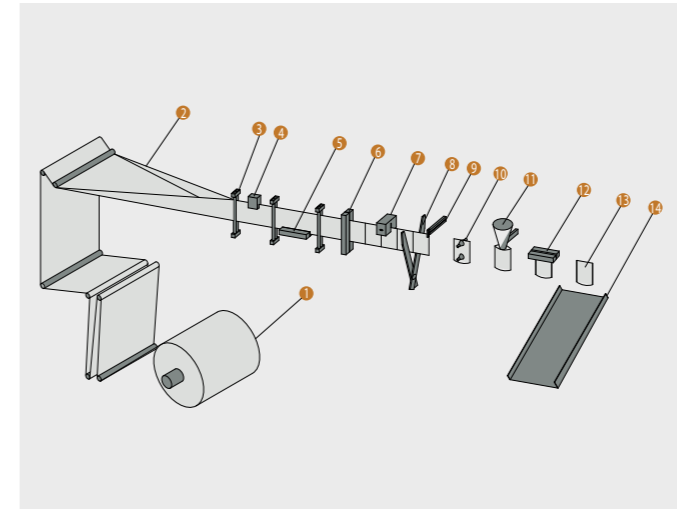
技术参数 Technical Parameter

型号 Model	袋型尺寸范围 Pouch Size	包装容量范围 Filling Capacity	包装速度 Packaging Capacity	功率 Power	耗气量 Air Consumption	设备尺寸 Machine Dimensions	重量 Weight	功能 Function
S-130	50mm×80mm (Min.)	260ml	40-80ppm	3.5kw	100 NL/min	2850mm(L) 970mm(W) 1500mm(H)	900kg	三边封, 四边封 3 side seal, 4 side seal
	140mm×220mm (Max.)							

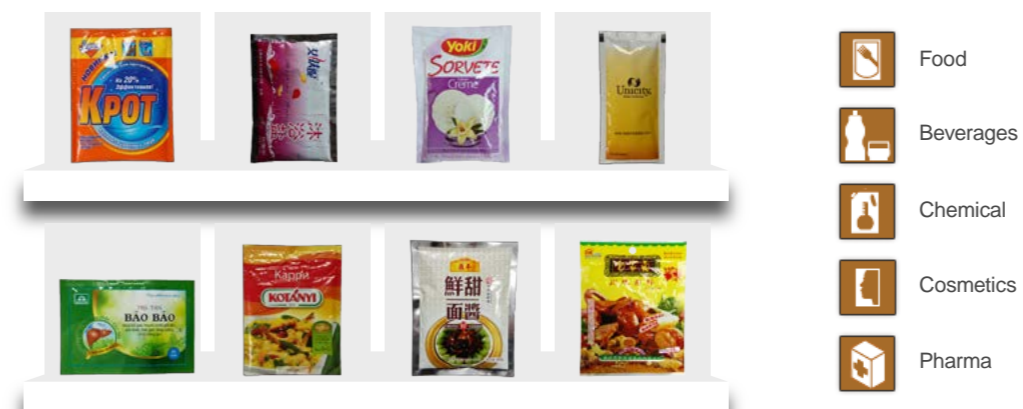
S-130 是针对小袋包装而设计的基本机型。包装效果美观, 设备灵活。
S-130 Standard model for small bags. Flexible design and good pouch appearance.

工艺流程图 Packing Process

- 1 放膜机构 Film Unwind
- 2 包装膜成型 Bag Forming
- 3 包装膜导向 Film Guide
- 4 色标检测 Photocell
- 5 底封机构 Bottom Seal
- 6 竖封机构 Vertical Seal
- 7 易撕口装置 Tear Notch
- 8 剪切机构 Cutting
- 9 牵袋机构 Pouch Pulling
- 10 开袋机构 Pouch Opening
- 11 充填机构 Filling
- 12 上封机构 Top Seal
- 13 成品 Finished Product
- 14 成品输出 Outlet



包装样袋 Packaging Example



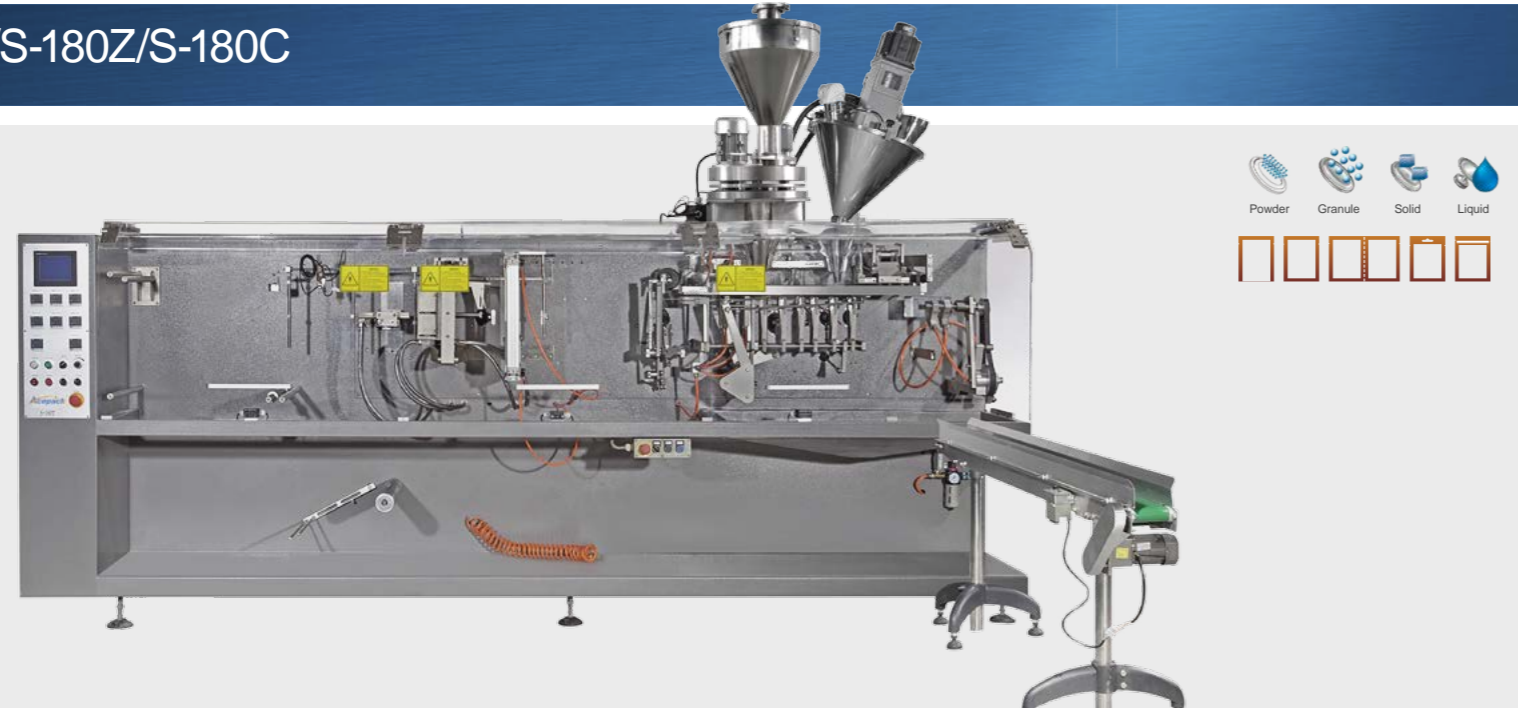
独立的封合装置 Independent Sealing Device

- 独立制袋, 封边无夹料
Independent pouch making, no product on seal
- 更高的封合强度, 减少漏袋
Higher seal strength, less leakage
- 袋子更平整更美
Better pouch appearance

轻盈化小车 Light Walking Beam

- 更高的运行速度
Faster working speed
- 更长的使用寿命
Longer operational life span

S-180/S-180T/S-180Z/S-180C

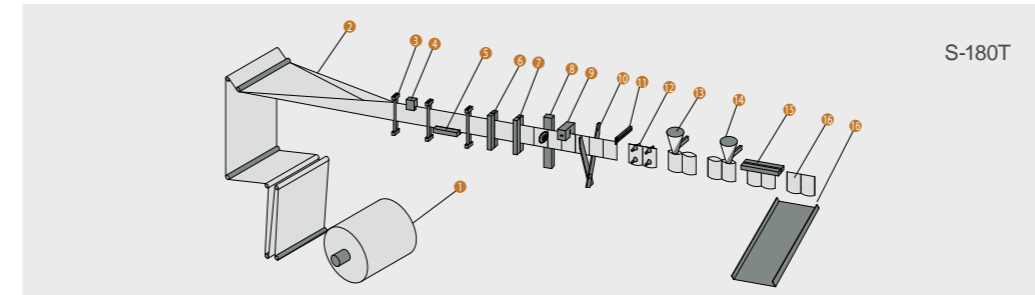


技术参数 Technical Parameter

型号 Model	袋型尺寸范围 Pouch Size	包装容量范围 Filling Capacity	包装速度 Packaging Capacity	功率 Power	耗气量 Air Consumption	设备尺寸 Machine Dimensions	重量 Weight	功能 Function
S-180	50mm×80mm (Min.)	400ml	40-80ppm	4.5kw	200 NL/min	3500mm(L) 970mm(W) 1500mm(H)	1400kg	三边封, 四边封 3 side seal, 4 side seal
	180mm×225mm(Max.)							
S-180T	50mm×80mm (Min.)	100ml	100-160ppm	4.5kw	200 NL/min	3500mm(L) 970mm(W) 1500mm(H)	1400kg	三边封, 四边封, 双联袋 3 side seal, 4 side seal, Twin-link
	90mm×180mm (Max.)							
S-180Z	50mm×80mm (Min.)	400ml	40-80ppm	5.5kw	200 NL/min	4650mm(L) 970mm(W) 1500mm(H)	1600kg	平袋, 异型, 挂孔, 拉链 Flat Pouch, Shape, Hanging Hole, Zipper
	180mm×225mm (Max.)							
S-180C	50mm×80mm (Min.)	400ml	40-80ppm	5.5kw	250 NL/min	4500mm(L) 970mm(W) 1500mm(H)	1800kg	平袋, 异型, 吸嘴 Flat Pouch, Shape, Spout
	180mm×225mm (Max.)							

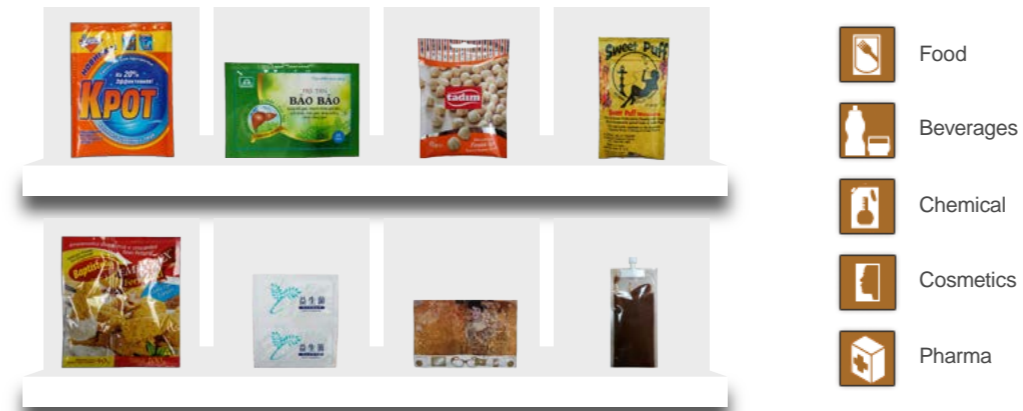
S-180 为小袋、中袋包装而设计, 拥有双工位下料及可以双联袋功能。
S-180 Design for middle & small size bags. Dual filling station and twin-link function.

工艺流程图 Packing Process



- | | | | |
|----------|---------------------------|----------|------------------|
| 1 放膜机构 | Film Unwind | 10 剪切机构 | Cutting |
| 2 包装膜成型 | Bag Forming | 11 牵袋机构 | Pouch Pulling |
| 3 包装膜导向 | Film Guide | 12 开袋机构 | Pouch Opening |
| 4 色标检测 | Photocell | 13 充填 I | Filling I |
| 5 底封机构 | Bottom Seal | 14 充填 II | Filling II |
| 6 第一竖封 | First Vertical Seal | 15 上封机构 | Top Seal |
| 7 第二竖封 | Second Vertical Seal | 16 成品 | Finished Product |
| 8 滚刀虚刀装置 | Rolling perforation knife | 17 成品输出 | Outlet |
| 9 易撕口装置 | Tear Notch | | |

包装样袋 Packaging Example



独立的封合装置 Independent Sealing Device

- 独立制袋, 封边无夹料
Independent pouch making, no product on seal
- 更高的封合强度, 减少漏袋
Higher seal strength, less leakage
- 袋子更平整更美
Better pouch appearance

滚轮虚刀装置 Rolling Perforation Device

- 结构简洁, 调整方便
Compact structure, easy adjustment
- 切口平整无毛边
Even perforation
- 使用寿命长
Longer operational life span

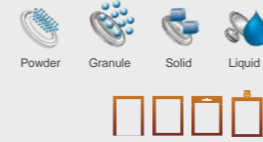
双工位下料 Dual Filling Station

- 缩短一半下料时间
Reduce filling time by half
- 提高下料精度
Improved filling accuracy
- 可 2 种物料组合下料
Can fill 2 products simultaneously

轻盈化小车 Light Walking Beam

- 更高的运行速度
Faster working speed
- 更长的使用寿命
Longer operational life span

S-180D/S-180DC/S-180DZ

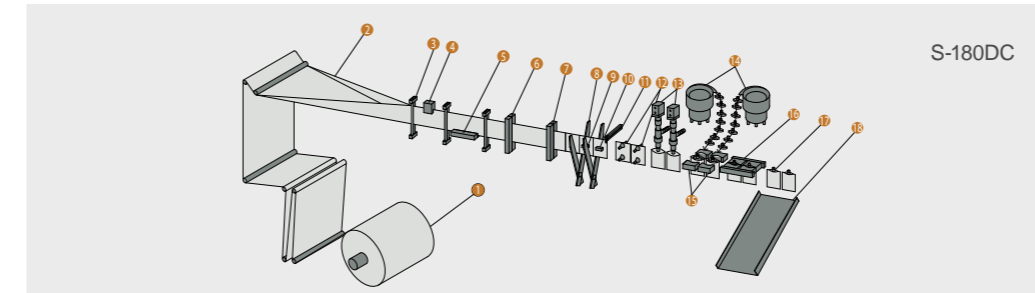


技术参数 Technical Parameter

型号 Model	袋型尺寸范围 Pouch Size	包装容量范围 Filling Capacity	包装速度 Packaging Capacity	功率 Power	耗气量 Air Consumption	设备尺寸 Machine Dimensions	重量 Weight	功能 Function
S-180D	50mm×80mm (Min.)	100ml	120-160ppm	4.5kw	200 NL/min	3550mm(L) 970mm(W) 1500mm(H)	1500kg	三边封, 四边封 3 side seal, 4 side seal
	90mm×180mm (Max.)							
S-180DC	50mm×80mm (Min.)	100ml	100-160ppm	4.5kw	200 NL/min	3550mm(L) 970mm(W) 1500mm(H)	1800kg	平袋, 异型, 吸嘴 Flat Pouch, Shape, Spout
	90mm×180mm(Max.)							
S-180DZ	50mm×80mm (Min.)	100ml	120-160ppm	6.5kw	200 NL/min	4350mm(L) 970mm(W) 1500mm(H)	1500kg	三边封, 四边封, 拉链 3 side seal, 4 side seal, Zipper
	90mm×180mm (Max.)							

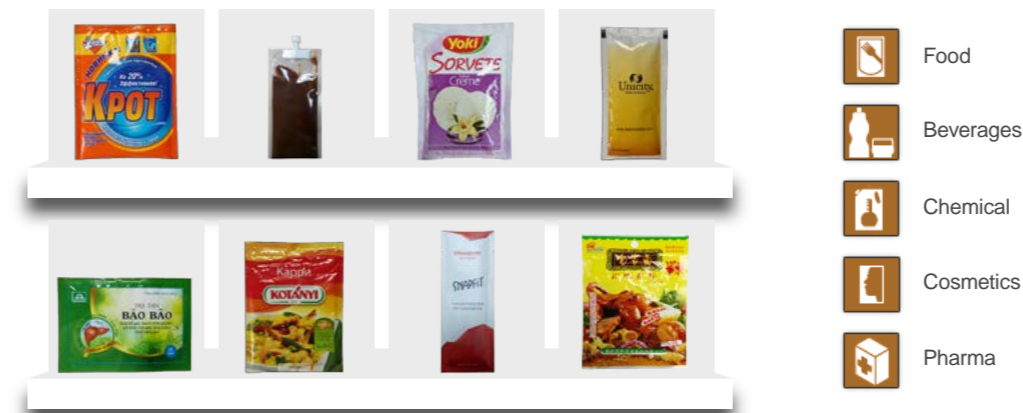
S-180DC 拥有简洁的双出加吸嘴模式设计,最高速度 160 袋 / 分钟,是实现小袋直吸嘴高速包装需求的经济型解决方案。
S-180DC outputs double top spout bags. Max speed 160 bags/min,the economic solution to implement high speed packaging request for top spout small bags.

工艺流程图 Packing Process



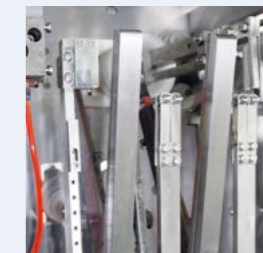
- | | | | |
|---------|----------------------|----------|------------------------|
| 1 放膜机构 | Film Unwind | 10 夹袋 | Pouch Catching |
| 2 包装膜成型 | Bag Forming | 11 牵袋机构 | Pouch Pulling |
| 3 包装膜导向 | Film Guide | 12 开袋机构 | Pouch Opening |
| 4 色标检测 | Photocell | 13 双充填机构 | Double Filling |
| 5 底封机构 | Bottom Seal | 14 双振动机构 | Double Vibrator |
| 6 第一竖封 | First Vertical Seal | 15 双加嘴 | Double Spout Inserting |
| 7 第二竖封 | Second Vertical Seal | 16 上封机构 | Top Seal |
| 8 双剪切机构 | Double Cutting | 17 成品 | Finished Product |
| 9 夹袋 | Pouch Catching | 18 成品输出 | Outlet |

包装样袋 Packaging Example



双出吸嘴功能 Spout Function

- 平整美观的吸嘴封合
Even spout seal with good appearance
- 吸嘴封合强度高, 无泄漏
High spout seal strength, no leakage



双剪刀机构 Duplex Design

- 运行稳定, 调整方便
Stable operation, easy adjustment
- 一次出两袋, 产能翻倍
2 pouches at the same time, double productivity



双展袋结构 (专利) Dual Pouch-Stretching Structure (Patent)

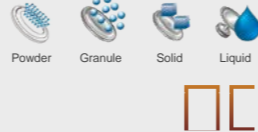
- 展袋平整无褶皱
Even pouch stretching
- 结构紧凑便于调整
Compact structure with easy adjustment



轻盈化小车 Light Walking Beam

- 更高的运行速度
Faster working speed
- 更长的使用寿命
Longer operational life span

S-240/S-240Z



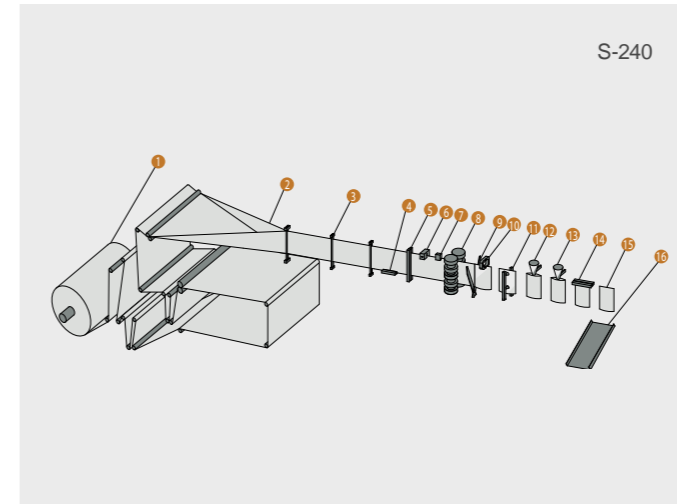
技术参数 Technical Parameter

型号 Model	袋型尺寸范围 Pouch Size	包装容量范围 Filling Capacity	包装速度 Packaging Capacity	功率 Power	耗气量 Air Consumption	设备尺寸 Machine Dimensions	重量 Weight	功能 Function
S-240	100mm×120mm (Min.)	1000ml	30-70ppm	5.5kw	300 NL/min	4600mm(L) 1120mm(W) 1500mm(H)	2000kg	三边封, 四边封 3 side seal, 4 side seal
	240mm×320mm (Max.)							
S-240Z	100mm×120mm (Min.)	1000ml	30-70ppm	7.5kw	300 NL/min	5400mm(L) 970mm(W) 1500mm(H)	2300kg	三边封, 四边封, 拉链 3 side seal, 4 side seal, Zipper
	240mm×320mm(Max.)							

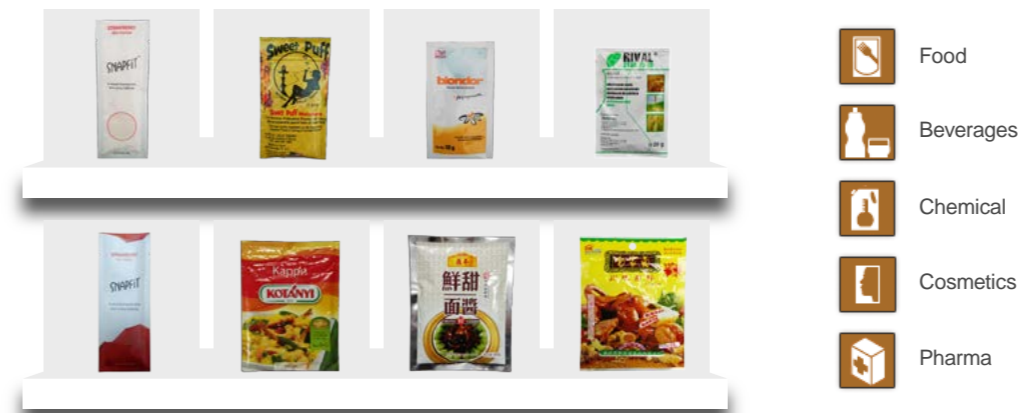
S-240 采用坚实的机械结构, 专为大袋、大规格包装需求而设计。
S-240 Special design for big pouch and big volume packaging. Solid mechanical structure.

工艺流程图 Packing Process

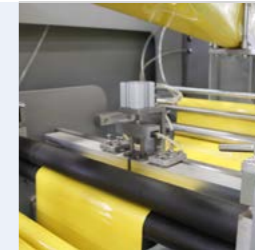
- 1 放膜机构 Film Unwind
- 2 包装膜成型 Bag Forming
- 3 包装膜导向 Film Guild
- 4 底封机构 Bottom Seal
- 5 竖封机构 Vertical Seal
- 6 易撕口装置 Tear Notch
- 7 色标检测 Photocell
- 8 伺服牵袋机构 Servo Advance
- 9 剪切机构 Cutting
- 10 夹袋机构 Pouch Catching
- 11 开袋机构 pouch opening
- 12 充填 I Filling I
- 13 充填 II Filling II
- 14 上封 Top Seal
- 15 成品 Finished Product
- 16 成品输出 Outlet



包装样袋 Packaging Example



- Food
- Beverages
- Chemical
- Cosmetics
- Pharma



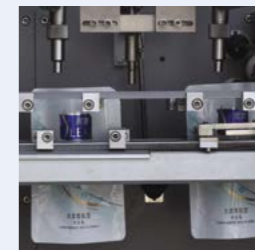
独立放膜机构
Independent Film Unwind Unit

- 保证薄膜张力控制
Ensure good control of film tensile force
- 更大的膜卷宽度、规格适应
More flexible for film roll width or pouch specification



伺服牵袋系统
Servo Advance System

- 数字化规格切换, 简单方便
Easy computerized specification change
- 牵袋更稳定, 偏差更小
Stable pouch advance with less deviation
- 牵袋扭矩大, 适合大规格
Big torque moment of pouch advance, suitable for big volume



双工位下料
Dual Filling Station

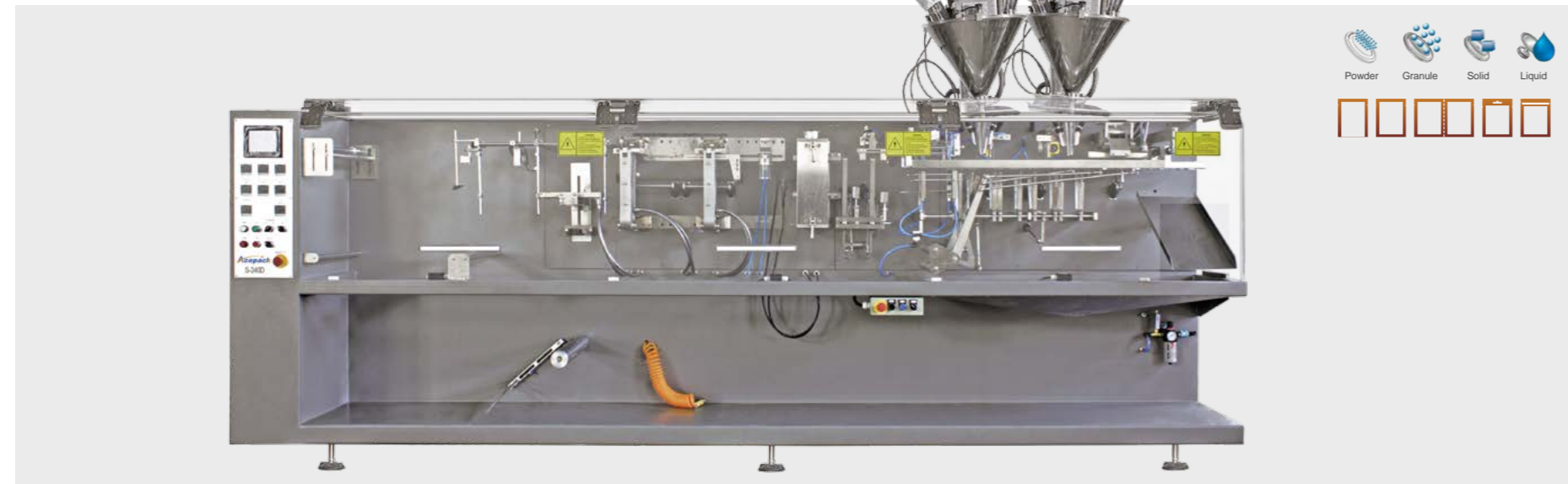
- 缩短一半下料时间
Reduce filling time by half
- 提高下料精度
Improved filling accuracy
- 可 2 种物料组合下料
Can fill 2 products simultaneously



刚性小车结构
Unelastic WB Structure

- 承重量大, 适合大规格包装
Big load bearing, suitable for big volume
- 小行程宽, 运行平稳
Wide WB moving distance with stable operation

S-240D/S-240T/S-240DZ/S-240DC

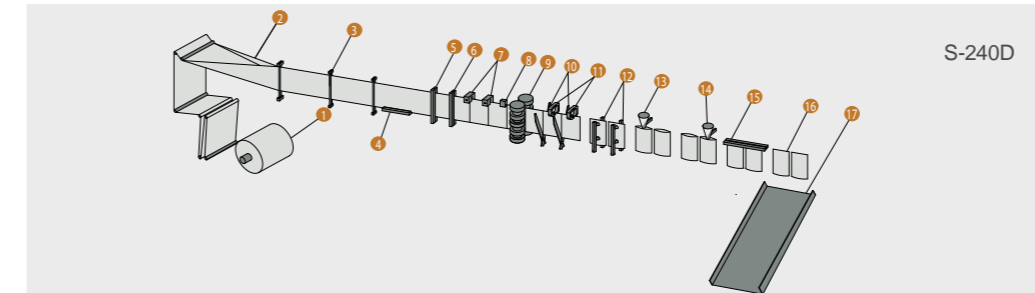


技术参数 Technical Parameter

型号 Model	袋型尺寸范围 Pouch Size	包装容量范围 Filling Capacity	包装速度 Packaging Capacity	功率 Power	耗气量 Air Consumption	设备尺寸 Machine Dimensions	重量 Weight	功能 Function
S-240D	65mm×80mm (Min.)	180ml	100-160ppm	5.5kw	200NL/min	4290mm(L) 970mm(W) 1500mm(H)	1800 kg	三边封, 四边封 3 side seal, 4 side seal
	120mm×225mm (Max.)							
S-240T	65mm×80mm (Min.)	180ml	100-160ppm	5.5kw	200 NL/min	4290mm(L) 970mm(W) 1500mm(H)	1900kg	三边封, 四边封, 双联袋 3 side seal, 4 side seal, Twin-link
	120mm×225mm (Max.)							
S-240DZ	65mm×80mm (Min.)	180ml	100-160ppm	6.5kw	200 NL/min	4900mm(L) 970mm(W) 1500mm(H)	2000kg	平袋, 异型, 挂孔, 拉链 Flat Pouch, Shape, Hanging Hole, Zipper
	120mm×225mm (Max.)							
S-240DC	65mm×80mm (Min.)	180ml	100-160ppm	6.5kw	300 NL/min	4290mm(L) 970mm(W) 1450mm(H)	2100kg	平袋, 异型, 挂孔, 吸嘴 Flat Pouch, Shape, Hanging Hole, Spout
	120mm×225mm (Max.)							

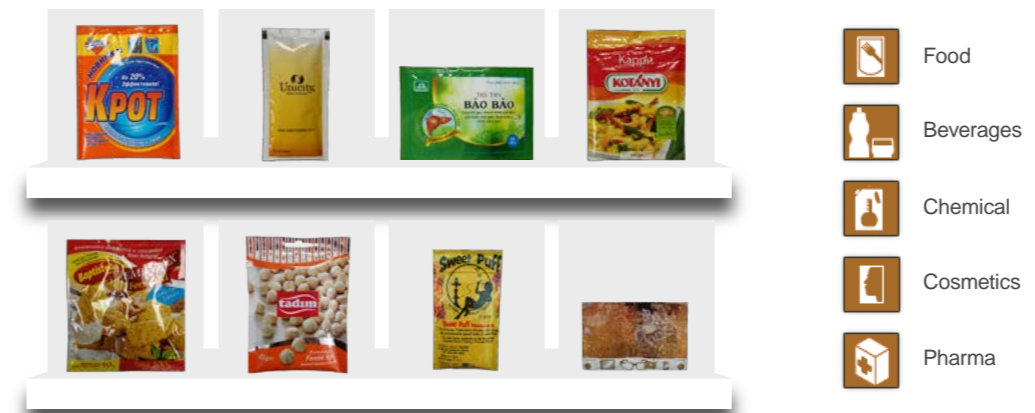
S-240D 拥有优秀的双出模式设计, 最高速度 160 袋 / 分钟, 出色的解决中、小袋高速需求。
S-240D Excellent solution for middle/small bag and high speed packaging. Good duplex design with maximum speed 160ppm.

工艺流程图 Packing Process



- | | | | |
|----------|-------------------|----------|-----------------------|
| 1 放膜机构 | Film Unwind | 10 双剪切机构 | Double Cutting |
| 2 包装膜成型 | Bag Forming | 11 双夹袋机构 | Double Pouch Catching |
| 3 包装膜导向 | Film Guild | 12 双开袋机构 | Double pouch opening |
| 4 底封机构 | Bottom Seal | 13 充填 I | Filling I |
| 5 第一竖封 | 1st Vertical Seal | 14 充填 II | Filling II |
| 6 第二竖封 | 2nd Vertical Seal | 15 上封 | Top Seal |
| 7 易撕口装置 | Tear Notch | 16 成品 | Finished Product |
| 8 色标检测 | Photocell | 17 成品输出 | Outlet |
| 9 伺服牵袋机构 | Servo Advance | | |

包装样袋 Packaging Example



独立的封合装置 Independent Sealing Device

- 独立制袋, 封边无夹料
Independent pouch making, no product on seal
- 更高的封合强度, 减少漏袋
Higher seal strength, less leakage
- 袋子更平整更美
Better pouch appearance



伺服牵袋系统 Servo Advance System

- 数字化规格切换, 简单方便
Easy computerized specification change
- 牵袋更稳定, 偏差更小
Stable pouch advance with less deviation
- 牵袋扭矩大, 适合大规格
Big torque moment of pouch advance, suitable for big volume



双出模式设计 Duplex Design

- 运行稳定, 调整方便
Stable operation, easy adjustment
- 一次出两袋, 产能翻倍
2 pouches at the same time, double productivity



轻盈化小车 Light Walking Beam

- 更高的运行速度
Faster working speed
- 更长的使用寿命
Longer operational life span

VBS-130/VBS-180/VBS-180D/VBSG-180/VBSG-180D

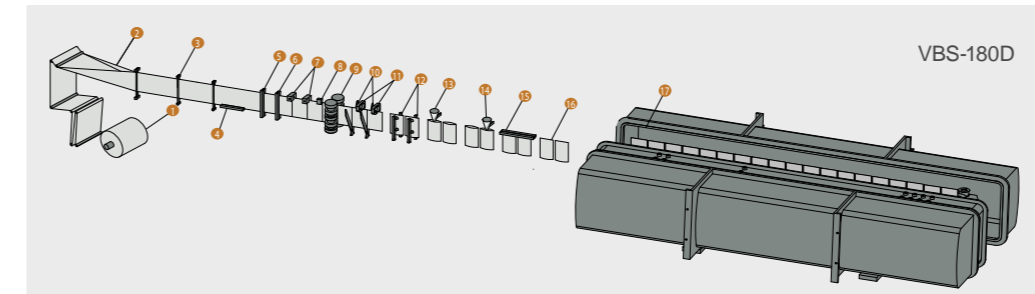


技术参数 Technical Parameter

型号 Model	袋型尺寸范围 Pouch Size	包装容量范围 Filling Capacity	包装速度 Packaging Capacity	功率 Power	耗气量 Air Consumption	设备尺寸 Machine Dimensions	重量 Weight	功能 Function
VBS-130	60mm×80mm (Min.)	160ml	40-80ppm	10.5kw	300NL/min	4250mm(L) 970mm(W) 1500mm(H)	1500 kg	三边封, 四边封 3 side seal, 4 side seal
	140mm×180mm (Max.)							
VBS-180	60mm×80mm (Min.)	400ml	40-80ppm	11.5kw	400 NL/min	4900mm(L) 970mm(W) 1500mm(H)	2000kg	三边封, 四边封 3 side seal, 4 side seal
	140mm×225mm(Max.)							
VBS-180D	50m×80mm (Min.)	100ml	120-180ppm	11.5kw	400 NL/min	4900mm(L) 970mm(W) 1500mm(H)	2100kg	三边封, 四边封 3 side seal, 4 side seal
	90mm×180mm(Max.)							
VBSG-180	60mm×80mm (Min.)	500ml	30-60ppm	8.8kw	400 NL/min	3390mm(L) 970mm(W) 1390mm(H)	1300kg	平袋, 自立袋, Flat Pouch, Doy Pack
	180mm×225mm (Max.)							
VBSG-180D	60mm×80mm (Min.)	200ml	80-120ppm	8.8kw	400 NL/min	3390mm(L) 970mm(W) 1390mm(H)	1300kg	平袋, 自立袋, Flat Pouch, Doy Pack
	80mm×225mm (Max.)							

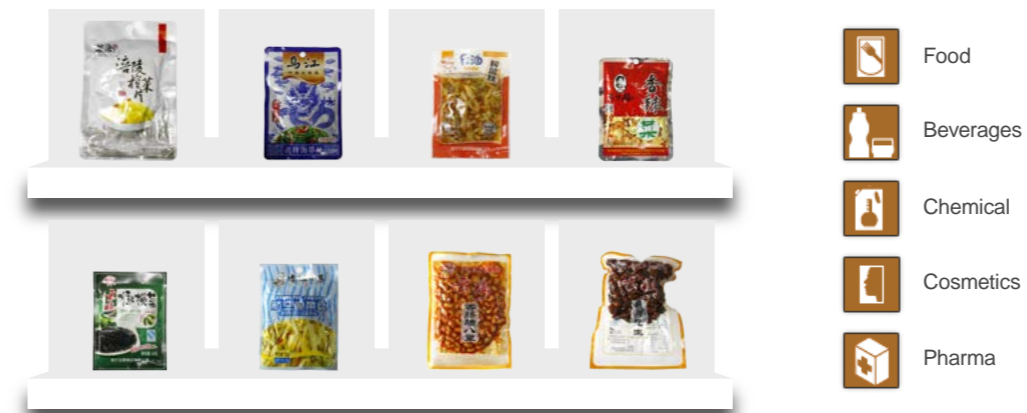
VBS 系列 VB 系列以水平式包装机为基础, 结合双腔室箱式真空设备, 实现产品的全自动真空袋包装。
VBS series Dual chamber type vacuum sealing equipment, compact structure, easy to adjust.

工艺流程图 Packing Process



- | | | | |
|----------|-------------------|----------|-----------------------|
| 1 放膜机构 | Film Unwind | 10 双剪切机构 | Double Cutting |
| 2 包装膜成型 | Bag Forming | 11 双夹袋机构 | Double Pouch Catching |
| 3 包装膜导向 | Film Guild | 12 双开袋机构 | Double pouch opening |
| 4 底封机构 | Bottom Seal | 13 充填 I | Filling I |
| 5 第一竖封 | 1st Vertical Seal | 14 充填 II | Filling II |
| 6 第二竖封 | 2nd Vertical Seal | 15 上封 | Pre Seal |
| 7 易撕口装置 | Tear Notch | 16 成品 | Finished Product |
| 8 色标检测 | Photocell | 17 抽真空 | Vacuumize |
| 9 伺服牵袋机构 | Servo Advance | | |

包装样袋 Packaging Example



- Food
- Beverages
- Chemical
- Cosmetics
- Pharma

独立的封合装置 Independent Sealing Device

- 独立制袋, 封边无夹料
Independent pouch making, no product on seal
- 更高的封合强度, 减少漏袋
Higher seal strength, less leakage
- 袋子更平整更美
Better pouch appearance

双出模式设计 Duplex Design

- 运行稳定, 调整方便
Stable operation, easy adjustment
- 一次出两袋, 产能翻倍
2 pouches at the same time, double productivity

轻盈化小车 Light Walking Beam

- 更高的运行速度
Faster working speed
- 更长的使用寿命
Longer operational life span

VRS-130/VRS-180/VRS-180D/VRSG-180/VRSG-180D

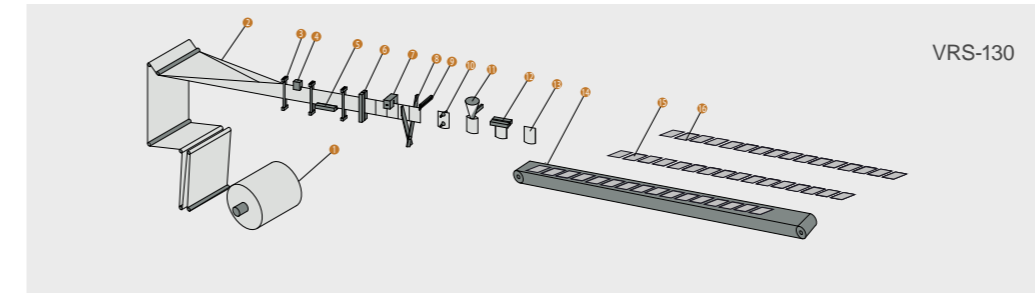


技术参数 Technical Parameter

型号 Model	袋型尺寸范围 Pouch Size	包装容量范围 Filling Capacity	包装速度 Packaging Capacity	功率 Power	耗气量 Air Consumption	设备尺寸 Machine Dimensions	重量 Weight	功能 Function
VRS-130	60mm×80mm (Min.)	160ml	40-80ppm	10.5kw	300NL/min	4450mm(L) 970mm(W) 1500mm(H)	1300 kg	三边封, 四边封 3 side seal, 4 side seal
	140mm×180mm (Max.)							
VRS-180	60mm×80mm (Min.)	400ml	40-80ppm	11.5kw	400 NL/min	5000mm(L) 970mm(W) 1500mm(H)	1700kg	三边封, 四边封 3 side seal, 4 side seal
	140mm×225mm (Max.)							
VRS-180D	50m×80mm (Min.)	100ml	120-180ppm	11.5kw	400 NL/min	5000mm(L) 970mm(W) 1500mm(H)	1800kg	三边封, 四边封 3 side seal, 4 side seal
	90mm×180mm (Max.)							
VRSG-180	60mm×80mm (Min.)	500ml	30-60ppm	8.8kw	400 NL/min	3490mm(L) 970mm(W) 1390mm(H)	1000kg	平袋, 自立袋, Flat Pouch, Doy Pack
	180mm×225mm (Max.)							
VRSG-180D	60m×80mm (Min.)	200ml	80-120ppm	11.5kw	400 NL/min	5000mm(L) 970mm(W) 1500mm(H)	1800kg	平袋, 自立袋, Flat Pouch, Doy Pack
	90mm×225mm (Max.)							

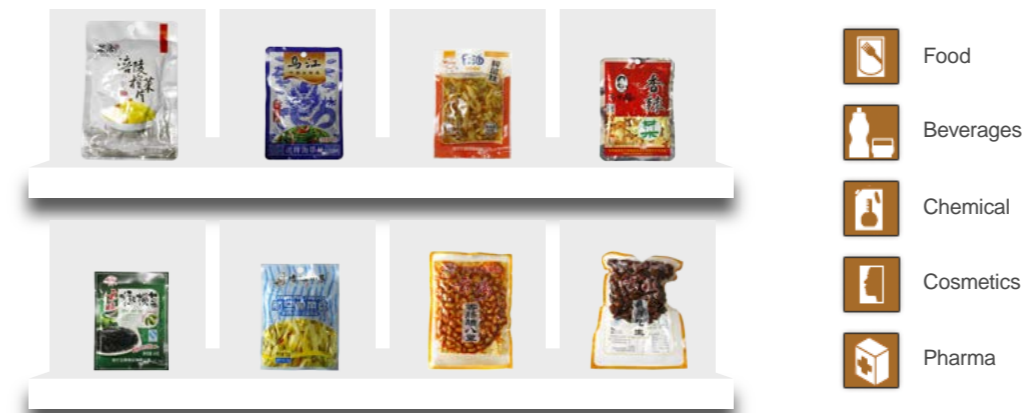
VRS 系列以水平式包装机为基础, 结合全自动滚动的抽真空设备, 实现产品的全自动真空袋包装。
VRS series Conveyor type vacuum sealing equipment, stable and fast.

工艺流程图 Packing Process



- | | | | |
|---------|---------------|---------|------------------|
| 1 放膜机构 | Film Unwind | 9 牵袋机构 | Pouch Pulling |
| 2 包装膜成型 | Bag Forming | 10 开袋机构 | Pouch Opening |
| 3 包装膜导向 | Film Guide | 11 充填机构 | Filling |
| 4 色标检测 | Photocell | 12 上封机构 | Per Seal |
| 5 底封机构 | Bottom Seal | 13 接袋 | Bag Catch |
| 6 竖封机构 | Vertical Seal | 14 输送移袋 | Feeding Conveyor |
| 7 易撕口装置 | Tear Notch | 15 抽真空 | Vacuumize |
| 8 剪切机构 | Cutting | 16 成品输出 | Outlet |

包装样袋 Packaging Example



- Food
- Beverages
- Chemical
- Cosmetics
- Pharma

计量下料装置 Ordinary Filling Device



伺服螺杆下料 Servo Motor Auger Filler

采用伺服电机驱动下料螺杆旋转下料, 通过控制伺服电机的脉冲数控制下料螺杆转数, 性能稳定可靠, 调节简单快捷。适用于粉体类, 细颗粒类物料的下料。

Auger Filler driven by Panasonic servo motor with features of stable, reliable and easy adjustment; suitable for powder, granule product filling.



活塞式下料 Piston Pump Filler

利用气缸推动活塞往复运动, 带动单向阀开闭, 并通过调整活塞的行程来控制送料流量。结合气动控制系统使之自动化工作。适用于粘稠体、胶悬体、乳油等流动性较差的液体物料灌装下料。

Piston Pump Filler is suitable for liquid product: viscous or colloidal liquid, cream and other non free-flowing liquid.



量杯下料 Volumetric Cup Filler

通过电机驱动旋转量杯, 完成物料的自动计量、充填。适用于颗粒类物料。

Volumetric Cup Filler can do automatic measurement and filling, suitable for granule product filling.



海霸泵下料 Hibar Pump Filler

结构精密, 紧凑。适用于粘稠体液体物料的小规格, 高精度灌装。

Structure of precision. It is used for viscous liquid with small volume and high accuracy requirement

计量下料装置 Ordinary Filling Device



螺杆量杯下料 Auger Volumetric Cup Filler

螺杆加计量量杯组合的下料装置, 配合全自动包装设备, 主要适用于榨菜、酱腌菜、下饭菜等物料的自动计量下料。

It is a device combining the auger with the volumetric cup, working with automatic packing machine. Suitable for automatic measuring and filling mustard, pickles and other tasty pickled vegetables.



流量计 Flow Meter

可以在极短的测量时间内进行极高测量精度和重复性的测量。适用于液体类物料的灌装计量, 易于操作和清洗。

Dosimag guarantees the highest level of accuracy and repeatability even for short measuring times. Suitable for liquid product dosing, easy operation and clean.



数粒下料 Tablet Counting Filler

采用多级振盘送粒, 振动频率可调, 落料均匀数粒准确, 更换品种不需要任何模具, 适用于胶囊、片剂、颗粒等药品或食品计数用下料使用。

Conveying tablets by multi-stage vibration plate, this counting filler's frequency is adjustable, the filling is even, the counting is precise. If changing different tablets, no need any mould. Suitable for counting and filling capsules, tablets and granules medicines and foods.

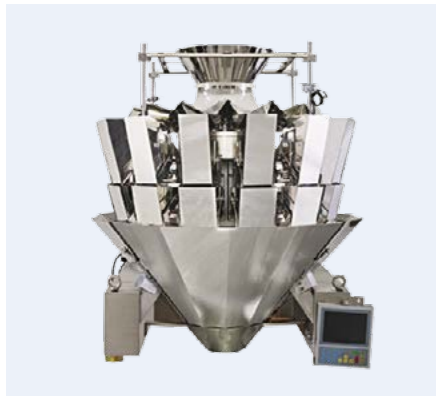


振动式下料 Vibrating Filler

振动下料装置广泛应用于电池、五金、电子、医药、食品、连接器等各行业, 是解决自动排序及送料难题的设备。

Vibrate Filler is widely used in industries of battery, hardware, electronics, medicine, food etc. It could solve the problems of automatic sorting and feeding.

计量下料、辅助装置 Ordinary Feeding Device



多头组合秤 Multi-head Combination Weigher

适用于膨化食品、坚果、休闲、冷冻食品、糖果等各种颗粒状、块状、球状物料的定量称重下料。
Multihead Weigher is an ideal solution for quantitative weighing and filling of puffed food, nuts, snacks or frozen food, candy etc. with various product shapes like granule, block or conglobation.



多头线性称 Multi-head Linear Weigher

适用于各类食品、调味品、种子、医药化工等颗粒状物料及粉料的定量称重下料。
Linear Weigher is suitable for quantitative weighing and filling of granule and powder product in food, seasoning, seed, drug and chemical industries.



工作平台 Operation Platform

采用了花纹铝或钢板制作，带安全护栏及楼梯防滑清洁使用安全。主要承载电脑组合称，是定量自动包装系统的重要配套。
Mounting Platform of multihead weigher made by embossed aluminum or iron with safety rail and stairs. It supports the multihead weigher and is an important part of quantitative automatic packaging system.



自动加嘴机 Automatic Spout Feeding Device

适用于吸嘴、瓶盖等的全自动供料使用，由电机驱动输料皮带转动，具有供料平稳、占地面积小，输送量大等特点。
Spout feeding is driven by motor with features of feeding stable, less occupied area, large transport capacity.

上料装置 Ordinary Filling Device



螺杆输料机 Inclined Screw Feeder

使用交流电机驱动上料螺杆转动，完成对包装机主机的自动加料。由包装机主机 PLC 控制单元控制进料，输料速度快，稳定性好，自动化程度高。适用于分体物料有一定高度的输料。
Inclined Screw Feeder driven by AC motor and product feeding is controlled by main packaging machine PLC. It can automatically feed product to main packaging machine, with features of fast feeding, stable and high degree of automation.



水平螺杆输料机 Horizontal Screw Feeder

使用交流电机驱动上料螺杆转动，完成对包装机主机的自动加料。由包装机主机 PLC 控制单元控制进料，输料速度快，稳定性好，自动化程度高。适用于粉体物料的水平输送。
Horizontal Screw Feeder driven by AC motor and product feeding is controlled by main packaging machine PLC. It can automatically feed product to main packaging machine, with features of fast feeding, stable and high degree of automation. Suitable for horizontal product conveying.



真空输料机 Vacuum Feeder

采用真空吸料原理，适用于细颗粒及粉体类物料的自动给料，与包装机主机联动控制。结构小巧，输料连接灵活，无残留，拆装清洗方面。
Vacuum Feeder uses vacuum to suck product and suitable for automatic feeding of small granule and powder product. It has compact structure with advantages of flexible connection, no product residue, easy dismounting and cleaning.



Z 型斗式提升机 Z Type Bucket Conveyor

提升机通过链条的传动带动料斗提升，用于垂直输送颗粒及小块状的物料，提升量大、且提升度高等优点。与电脑组合称和包装机组成定量自动包装系统，并由控制电路以及料位控制实现自动供料和停止的自动化功能。
Bucket Conveyor is used to vertically conveying granule and small block product with advantages of big volume feeding and high elevation. It could combine with multihead weigher and packaging machine to constitute quantitative packaging automation system. Controlled by steering circuit and level sensor, it could perform automatic feeding/stop feeding.

上料装置和除尘 Special Feeding Device and Dedusting Equipment



斜斗式提升机 Inclined Conveyor

通过链条的传动带动料斗提升, 用于倾斜输送颗粒及小块状的物料, 提升量大, 且提升度高等优点. 与电脑组合称和包装机组成定量自动包装系统, 并由控制电路以及料位控制实现自动供料和停止的自动化功能。

Inclined Conveyor is used to vertically conveying granule and small block product with advantages of big volume feeding and high elevation. It could combine with multihead weigher and packaging machine to constitute quantitative packaging automation system. Controlled by steering circuit and level sensor, it could perform automatic feeding.



水平快退式输料机

Fastback Horizontal Motion Conveyor

适用于常规物料以及一些难处理的产品, 如沙拉, 糕点, 饼干, 糖果等。产品在输送槽中有各自规律地向前滑动, 不相互碰撞, 无破损, 不粘连, 特别适合输送极易破碎的和表面附着调味料的产品, 避免如调味料损失, 粘连的问题, 输送槽易清洁, 产品表面调味料涂层不会被粘连无卫生死角, 输送量大。This conveyor is for to handle regular products and some products that is difficult to transfer. For example, salad, cakes, cookies, candy, etc. During the conveying, the products slide forward regularly, do not colliding, damage, adhesion to each other. This is specially suitable for products easy to break and flavoring attached to the surface. It avoids the problem of flavoring dropping off and products adhesion. The conveyor is easy to clean, its surface coating is difficult to attach, no corner or spot that is not able to be clean up, and capable to transfer large quantity products.



单斗式提升机 Single-bucket Conveyor

适用于粮食、食品、饲料和化工等行业物料的垂直升运。提升机通过皮带传动带动畚斗提升, 具有密封性好, 提升量大, 提升高度高等优点。Single-bucket conveyor is a vertical elevator for materials like as grain, food, fodder, and chemical industry. The conveyor is driven by the belt with the feature of good sealing, large capacity, and high lifting height conveying.



粉尘捕集器 Dust Collector

本机组主要结构由设备本体、过滤段、风机段、脉冲清灰段、电器控制装置、集灰段部份组成, 主要应用于粉体包装的除尘配套。Dedusting Equipment is composed by equipment body, filter section, fan section, pulse dedusting section, electrical control part, dust collection section. This equipment is mainly used in powder packaging.

后道包装设备 End-line Packing Equipment



杀菌釜 Sterilizer (Retort Machine)

应用于食品、药品或其它适合使用高温灭菌方式的行业, 对半成品、成品进行高温灭菌处理。具有温度控制灵活、受热面积大, 热效率高、加热均匀、液料沸腾时间短等特点。Sterilizing semi-finished and finished products, the sterilizer is used in the industry of food, pharmaceuticals, etc. Flexible temperature control, large heating area, high thermal effect, uniform heating, short liquid boiling time.



全自动装盒 Automatic Box Packing Machine

配合全自动包装机及在线检测和理袋等装置, 主要应用于袋装产品的全自动装盒包装。同时, 可依据生产需要配置打码、贴标、盒体热收缩包装等其它功能。实现袋装产品的全自动包装生产。Cooperating with fully automatic packing machine and online detection and bag-in-order device, it is used in automatic box packing. It can also configured function like coder, label, and heat shrinkable packing.



全自动装箱 Automatic Carton Packing Machine

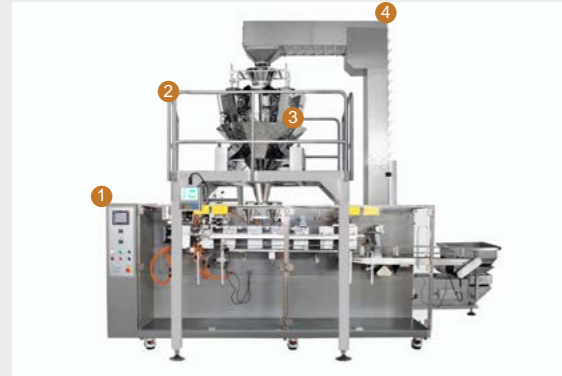
全自动开箱、装箱、封箱设备, 应用于包装自动生产线, 对包装袋或包装盒进行全自动装箱处理。Fully automatic carton packing machine include carton erecting, carton packing, carton sealing, dealing with packing bag and packing box.



机器人码垛 Robot Palletizer

配套全自动包装生产线使用, 具有自动化程度高、安装维护方便, 适应性广等特点, 大大降低劳动强度、提高生产效率和包装自动化程度。Robot palletizer reduces the labor intensity greatly, improves the production efficiency and automation degree of packing with the feature of high degree of automation, convenience of installation and maintenance, wide adaptability, etc.

包装解决方案 Packaging Solution

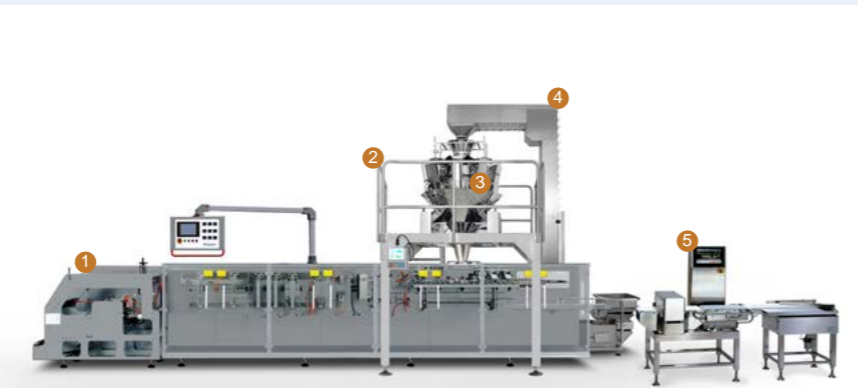


- ① 预制袋包装机 Pre-made Pouch Packaging Machine
- ② 安装平台 Operation Platform
- ③ 多头秤 Multi-head Combination Weigher
- ④ Z型斗式提升机 Z Type Conveyor

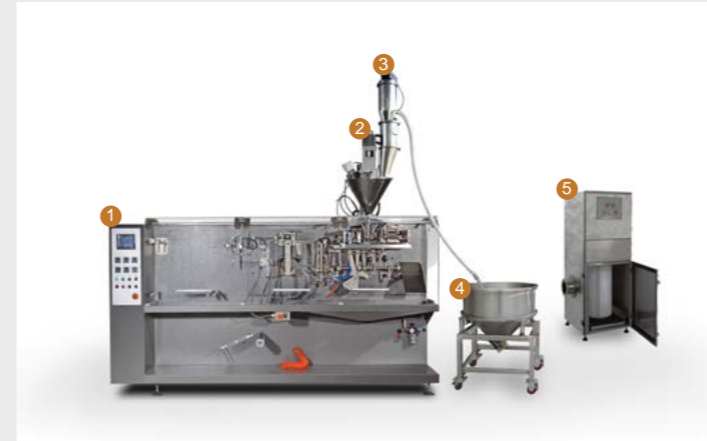
适用于各类物料、不同袋型的多样化包装, 下料形式多样选择, 袋型规格更换方便。
Suitable for various product and pouch packaging, flexible filling type, easy specification chang-over.

- Automatic Doy Pack Machine 全自动自立袋包装机 ①
- Operation Platform 安装平台 ②
- Multi-head Combination Weigher 多头称量 ③
- Z Type Conveyor Z型斗式提升机 ④
- Check Weigher 重量选别秤 ⑤

适用于不同物料的自立袋全自动包装
Suitable for automatic stand up pouch packaging for various product.



包装解决方案 Packaging Solution

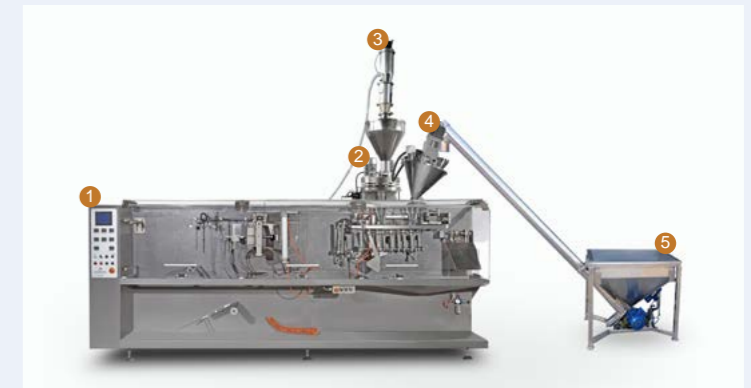


- ① 包装主机 Packagng Main Machine
- ② 伺服粉剂下料装置 Servo Motor Auger Filler
- ③ 真空上料机 Vacuum Feeder
- ④ 运料车 Product Feeding Dumper
- ⑤ 粉尘捕集器 Dust Collector

应用于常规袋型的粉剂包装生产, 易清洗, 无残留, 连接方便快捷。实现粉类物料的无尘包装。
Suitable for powder packaging production, easy for cleaning, no product residue, quick connecting. dust-free packaging for powder.

- Packaging Main Machine 包装主机 ①
- Volumetric Cup Filler 旋转量杯下料装置 ②
- Vacuum Feeder 真空上料机 ③
- Servo Motor Auger Filler 伺服粉剂下料装置 ④
- Screw Feeder 螺杆上料机 ⑤

适用于两种或多种物料的配方包装, 下料方式多样, 袋型美观大方
Suitable for two kinds or multi kinds of product filling in one pouch, flexible filling type and application, good pouch appearance.

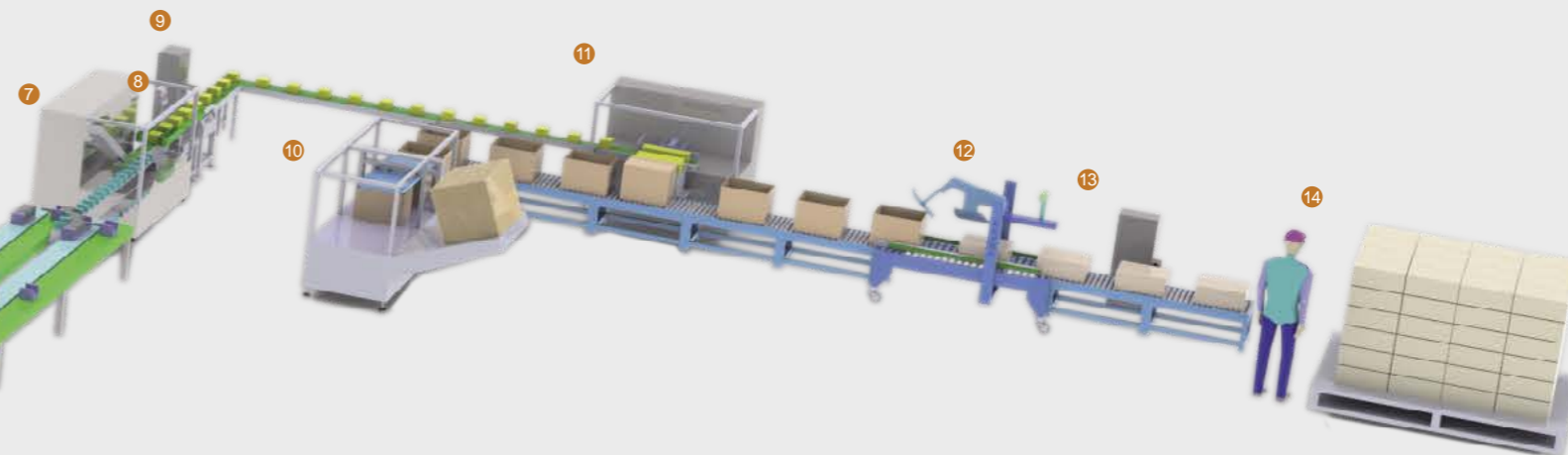


整线包装解决方案 Overall Packaging Solution

- 1 正压供料系统 Positive pressure feeding system
- 2 输料机 Product conveying machine
- 3 安装平台 Installation platform
- 4 水平式包装机 Horizontal packaging machine
- 5 包装袋输送 Bags delivery system
- 6 包装袋码垛装置 Bags palletizing device
- 7 全自动装盒机 Automatic box packing machine
- 8 重量检测机 Check weigher
- 9 喷码机 Code printer
- 10 开箱机 Carton erector
- 11 装箱机 Carton packing machine
- 12 封箱机 Carton sealing machine
- 13 大字符喷码机 Large character code printer
- 14 码垛 Palletizing



整线包装方案 Overall Packaging Solution



上海欧朔智能包装科技有限公司依托先进的设计理念与丰富的行业包装经验为客户提供各种袋包装全自动生产线。行业包括食品、日化、农化等。根据客户的物料特性，生产工艺要求及场地条件为您量身定制个性化解决方案，助建理想工厂。

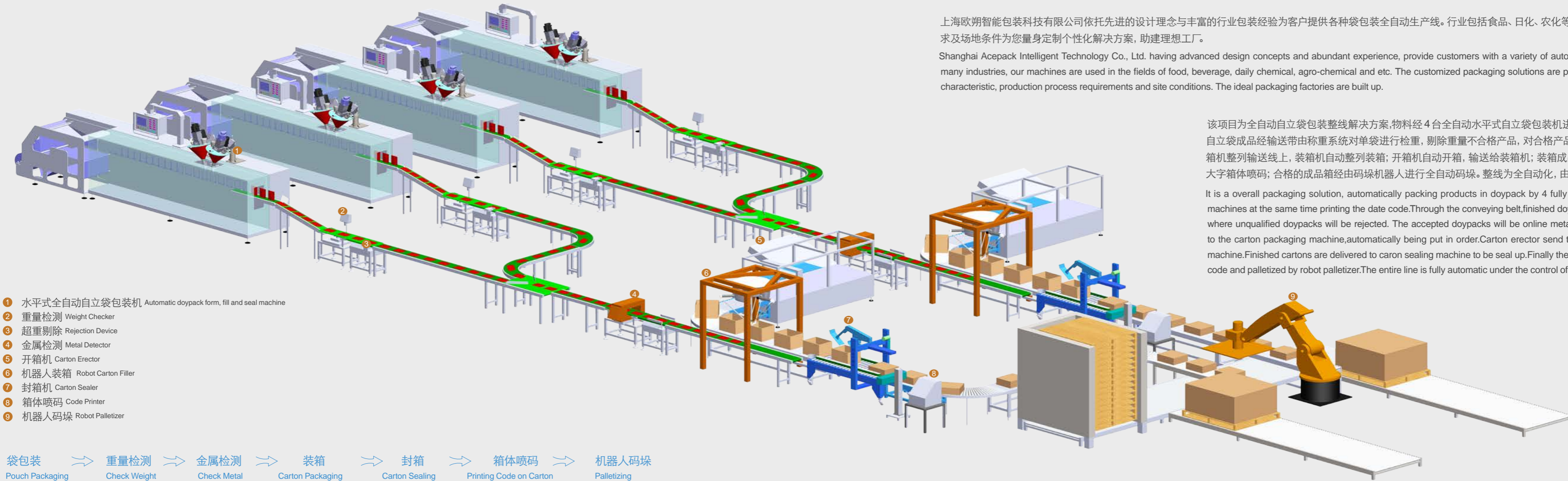
Shanghai Acepack Intelligent Technology Co., Ltd. having advanced design concepts and abundant experience, provide customers with a variety of automatic bags packaging lines. Applied to many industries, our machines are used in the fields of food, beverage, daily chemical, agro-chemical and etc. The customized packaging solutions are provided according to clients' products characteristic, production process requirements and site conditions. The ideal packaging factories are built up.

该项目采用正压供料系统为 6 台包装机集中供料，物料经 S-180D 型水平式双出袋全自动包装进行全自动袋包装包装，并完成包装袋的日期打码；成品袋经输送带由数包叠袋设备进行计数叠袋码垛，输送至格子收集输送线上，通过旋转推袋装置把成品袋竖向推进装盒机输送带隔板里由装盒机完成装盒；盒装产品经过称重系统对单盒进行检重，剔除重量不合格产品，对合格产品进行箱体小字喷码；盒装成品输送到装箱机整列输送线上，装箱机自动整列装箱；开箱机自动开箱，输送给装箱机；装箱成品经输送带送入自动封箱机封箱，大字符箱体喷码，人工整理码垛。整线为全自动化，由整线连线总控制系统控制。

This project adopts a positive pressure feeding system to feed 6 centralized packaging machines. The Model S-180D (horizontal double bags output packaging machines) automatically pack products in bags at the same time that print the date code. Through the conveying belt, the finished bags are sent to the count and fold device and finally are palletized. Then batches of bags are moved on to the conveying tray line. After that, the rotary pushing device pushes the bags into the feeding belt to the box packaging machine. Finished boxes go through the check weigher where unqualified boxes will be rejected. Small character code is printed on the qualified boxes. Then the boxes are sent to the carton packaging machine, automatically being put in order. Carton erector sent finished cartons to carton packaging machine. Finished cartons are delivered to carton sealing machine to be seal up. Finally the cartons are printed with a big character code and stacked by manual work. The entire line is fully automatic under the control of a central line control system.

整线包装解决方案 Overall Packaging Solution

整线包装方案 Overall Packaging Solution



上海欧朔智能包装科技有限公司依托先进的设计理念与丰富的行业包装经验为客户提供各种袋包装全自动生产线。行业包括食品、日化、农化等。根据客户的物料特性，生产工艺要求及场地条件为您量身定制个性化解决方案，助建理想工厂。

Shanghai Acepack Intelligent Technology Co., Ltd. having advanced design concepts and abundant experience, provide customers with a variety of automatic bags packaging lines. Applied to many industries, our machines are used in the fields of food, beverage, daily chemical, agro-chemical and etc. The customized packaging solutions are provided according to clients' products characteristic, production process requirements and site conditions. The ideal packaging factories are built up.

该项目为全自动自立袋包装整线解决方案,物料经4台全自动水平式自立袋包装机进行包装,并完成包装袋的日期打码;自立袋成品经输送带由称重系统对单袋进行检重,剔除重量不合格产品,对合格产品进行在线金属检测;成品输送到装箱机整列输送线上,装箱机自动整列装箱;开箱机自动开箱,输送给装箱机;装箱成品经输送带送入自动封箱机封箱,大字箱体喷码;合格的成品箱经由码垛机器人进行全自动码垛。整线为全自动化,由整线连线总控制系统控制。

It is a overall packaging solution, automatically packing products in doypack by 4 fully automatic horizontal doypack packing machines at the same time printing the date code. Through the conveying belt, finished doypacks go through the weighing system where unqualified doypacks will be rejected. The accepted doypacks will be online metal detected. Then the doypacks are sent to the carton packaging machine, automatically being put in order. Carton erector send the opened carton to carton packaging machine. Finished cartons are delivered to carton sealing machine to be seal up. Finally the cartons are printed with a big character code and palletized by robot palletizer. The entire line is fully automatic under the control of a central line control system.



我们的用户
Our Clients

上海欧朔智能包装科技有限公司
Shanghai Acepack Intelligent Technology Co., Ltd.

上海欧朔国际贸易有限公司
Shanghai Acepack International Trade Co., Ltd.

地址 (Add): 上海市奉贤区信诺路 330 号

#330 Xinnuo Road, Fengxian District, Shanghai, China.

电话 (Tel): 86-21-61189590(591,592,593)

86-21-61189599

客服热线 (Hotline) : 400 001 6888

传真 (Fax): 86-21-61189594

邮编 (Zip): 201400

网址 (Web): www.acepackgroup.com www.acepackgroup.cn

E-mail: sales@acepackgroup.com